

CREATIVE / TRENDING  
TONES

CURATED / STYLED  
STAPLES

CRAFTED / PRETTY  
PRACTICAL

# MAISON

collection 2021

ESSENTIALS

NEW  
NEUTRALS  
REIMAGINED DESIGNS



maisonsurface.com

PATTERNS & COLOR

- |       |  |       |  |
|-------|--|-------|--|
| 6-9   | ANDY<br><i>creme</i><br><i>blu</i>                           | 78-83 | TOBY<br><i>blu</i><br><i>creme</i>                     |
| 10-15 | BAGUETTE 13<br><i>blanc</i><br><i>creme</i><br><i>noir</i>   | 84-89 | WEAVE 8<br><i>blanc</i><br><i>creme</i><br><i>noir</i> |
| 16-21 | JETON<br><i>blanc</i><br><i>creme</i><br><i>noir</i>         |       |  |
| 22-25 | LIPTON<br><i>blu</i><br><i>cosse</i>                         |       |  |
| 26-29 | MAURE<br><i>blu</i><br><i>cosse</i>                          |       |  |
| 30-35 | MEANDER SMALL<br><i>blanc</i><br><i>creme</i><br><i>noir</i> |       |  |
| 36-41 | PARQUET<br><i>blanc</i><br><i>creme</i><br><i>noir</i>       |       |  |
| 42-47 | RIO<br><i>blanc</i><br><i>creme</i><br><i>noir</i>           |       |  |
| 48-53 | RONDELLE<br><i>blanc</i><br><i>creme</i><br><i>noir</i>      |       |  |
| 54-57 | SALVADOR<br><i>blu</i><br><i>creme</i>                       |       |  |
| 58-61 | SIGRID<br><i>blu</i><br><i>creme</i>                         |       |  |
| 62-67 | THERA<br><i>blanc</i><br><i>creme</i><br><i>noir</i>         |       |  |



PARQUET *cosse*



## THE RIGHT CHOICE FOR ALL THE RIGHT REASONS

At Maison, we understand that your luxury tile experience includes the entire process, from the initial design to the finished product.

From small installs and room refreshes to top-to-bottom exterior and interior renovations, Maison will open your eyes to the endless possibilities of tile.

BAGUETTE noir

### FAMILY OWNED

Maison Surface draws on a long legacy of tile experts. We believe in hard work, dedication, and attention to detail. These virtues are our guarantee.

### PROFESSIONAL

Maison offers unparalleled knowledge at your fingertips. We are here to answer any of your questions from material selection, order process to installation

### INNOVATION

Maison Surface leads the industry in novel techniques & materials. We are at the vanguard of conceptual design ensuring we are a company that always has it's eye on the future.

### CREATIVE

By blending inspiration, imagination, and trend-setting concepts, our design team brainstorms custom solutions that match your budget, style, and project.

### CURATED

Our tile materials—including stone, marble, glass, metals & more—are hand-selected to ensure the industry's finest quality and highest in-stock availability.

### CRAFTED

Our artisanal manufacturing process ensures exceptional quality --with precision cuts, consistent grout joints, and individually wrapped tiles --while our expert craftsmen ensure a smooth installation in your home.

### STYLE

Maison Surface's extensive catalog of designs will meet any of your style need. Endless options for color, scale & applications.

### TREND SETTING

Look to Maison for the latest trends in home design & decor. We are always at the forefront of the freshest palettes, textures and patterns.

### DETAIL ORIENTED

Maison's eye for detail survey's each step of the process. From expert craftsmanship, precision manufacturing & exceptional quality control.

# ESSENTIALS

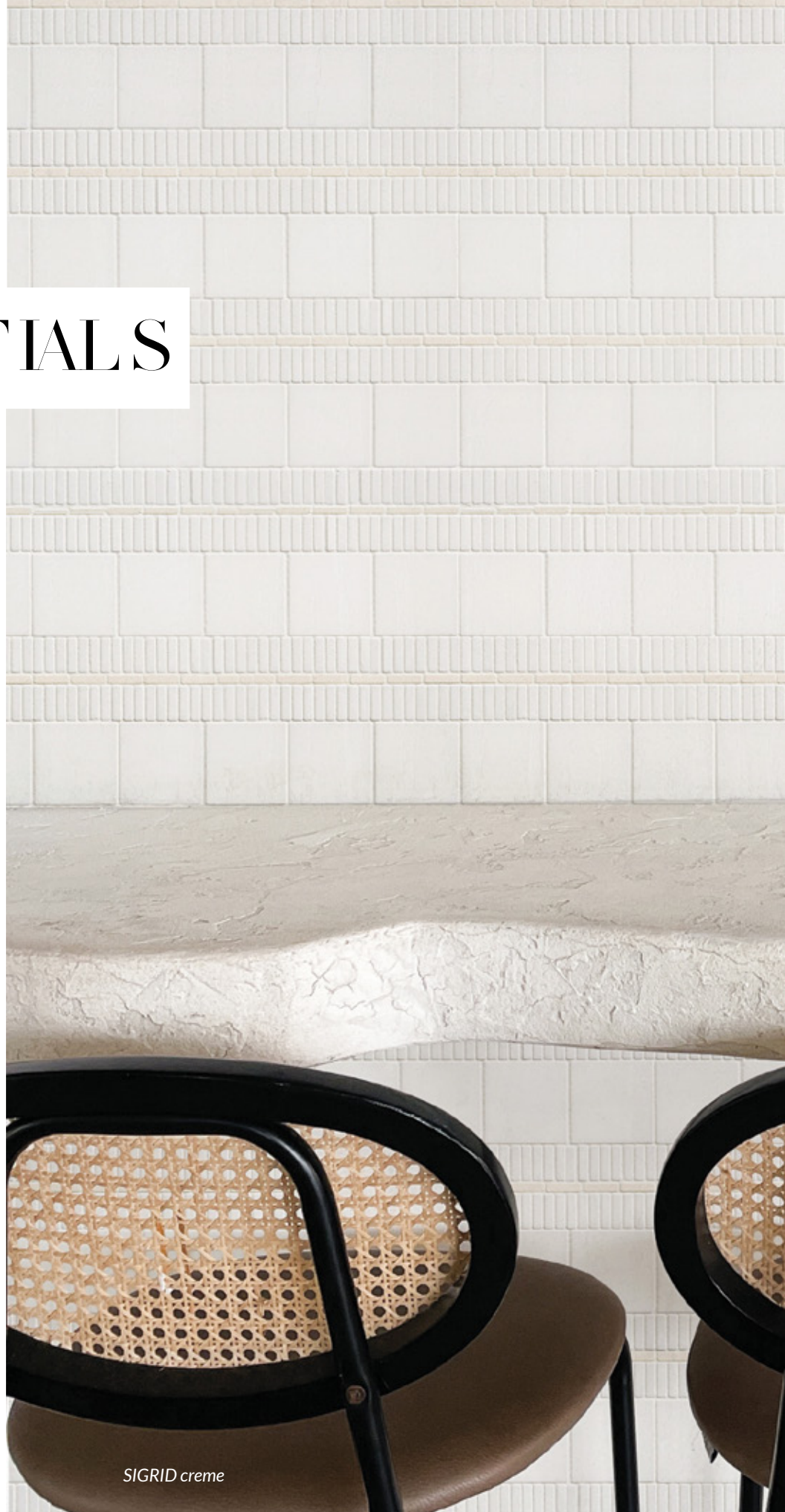
Hand-selected from across our diverse pattern offerings

Pattern Count: 14

Material: Marble & Limestone

---

Essentials commences any tile journey with a collection of beautiful basics. Expanding into both black and cream & white colorways, this is the place to look for trending tones. This update to Essentials brings in the bold base of Noir marble if you are looking to make a statement. The blend of timeless Thassos with the new addition of Cosse limestone as an accent is made for refreshing any dull space. Featuring 14 different patterns within 9 collections, Essentials enables you to compose designs with a wide variety of piece sizes and pattern repeat options that are universally complimentary—and each pattern can speak for itself, whether used in mosaics, accent walls, or other applications.



*SIGRID creme*



FOUNDATION OF STYLE ↑

*These In Stock stunners are essential to any renovation, rejuvenation, restoration or new build.*



## ANDY CREME



Unit: 12 11/16" x 12 11/16"  
Unit Yield: 1.18 sqft

Stone:  
Thassos honed  
Cosse honed

### ↖ HIP TO BE SQUARE

*Don't let the sharp edges fool you. Andy is a playful pattern that transcends its square form to bring life to any application.*

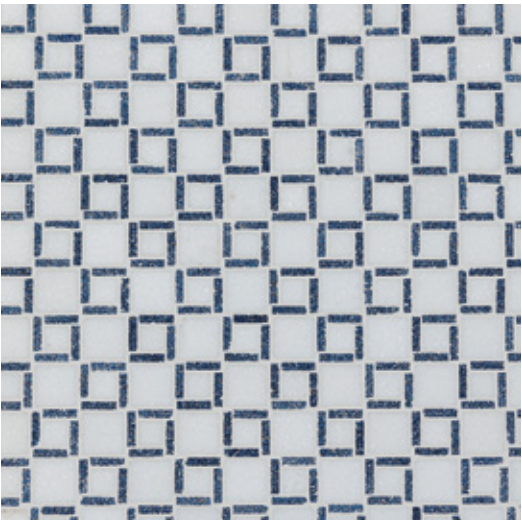
SOHO BOHO →

*Bohemian style layers textures, colors and patterns ultimately creating a carefree yet charismatic interior.*





## ANDY BLU



Unit: 12 11/16" x 12 11/16"  
Unit Yield: 1.18 sqft

Stone:  
Thassos honed  
Cosse honed

### BLUE BOX

*The blue of Andy adds a lively rounding of the square.*

OUT OF LINE →

*Hanging on to the timeless trend of nautical blue and white. This composition give a nod to the natural with fresh splashes of green.*





## BAGUETTE 13 BLANC



Unit: 12 5/16" x 12 5/8"  
Unit Yield: 1.08 sqft

Stone:  
Blanc honed

### ↙ STYLISH STAPLE

*Baguettes are not just for rings and bakeries. This timeless shape is perfect to add texture at any scale.*

RE-FRESH →

*Prep your bath with Baguette 13 when you are searching for a fresh revitalization. This is a mosaic meant for meditation.*





## BAGUETTE 13 CREME



Unit: 12 5/16" x 12 5/8"  
Unit Yield: 1.08 sqft

Stone:  
Cosse honed

### FUN FACET

*Baguette 13 is a shape that is as functional as it is fun. The perfect size for all installations.*

DREAM CREME →

*The Cosse limestone showcased in this lovely bath application is the stuff dreams are made of. A fresh hue that takes this copper faucet set into the trends of today without sacrificing an ounce of durability.*





## BAGUETTE 13 NOIR



Unit: 12 5/16" x 12 5/8"  
Unit Yield: 1.08 sqft

Stone:  
Noir honed

### STYLISH STAPLE

*Baguettes are not just for rings and bakeries. This timeless shape is perfect to add texture at any scale.*

SERVE STYLE →

*Prep your kitchen with Baguette 13 when you are going for the Antique Farmhouse style. Rustic elegance achieved by a textural pattern finished in a soothing hone.*





## JETON BLANC



Unit: 11 3/4" x 13"  
Unit Yield: 1.06 sqft

Stone:  
Blanc honed  
Blanc leathered  
Blanc polished

↖ RE-FINED

*Hand clipped style in a serene scene.  
Redefining refined texture.*

BESPOKE STYLE →

*The beautiful hand  
clipped edges of Jeton  
adds an almost custom  
accent to your project.*





## JETON CREME



Unit: 11 3/4" x 13"  
Unit Yield: 1.06 sqft

Stone:  
Cosse honed  
Cosse leathered  
Cosse polished

### TEXTURAL TREAT

*The hand clipped tesserae of Jeton are a true delight to the senses both sight and touch.*

NEW AGED →

*There is no denying that t worn and weathered natural stone is having a moment. Jeton in Cosse limestone is trendy as it is timeless. While changing the motifs & décor of your home this mosaic can play the role of chameleon. Able to pair with any updates you can come up with.*





## JETON NOIR



Unit: 11 3/4" x 13"  
Unit Yield: 1.06 sqft

Stone:  
Noir honed  
Noir leathered  
Noir polished

## BISTRO CHIC

*Capture the casual class of a French bistro with the refined finish of Jeton.*

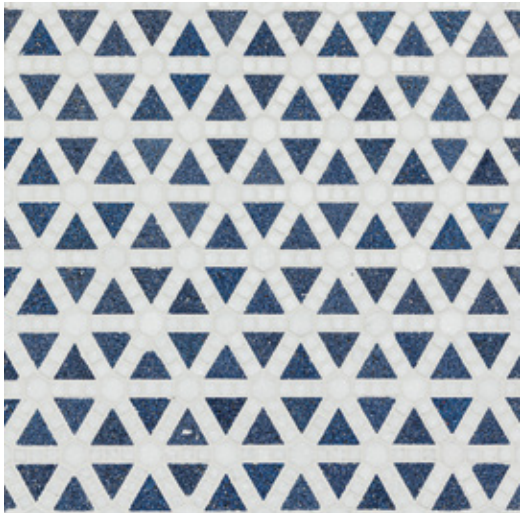
BESPOKE STYLE →

*The beautiful hand clipped edges of Jeton adds an almost custom accent to your project.*





## LIPTON BLU



Unit: 12 1/16" x 11 15/16"  
 Unit Yield: 1.01 sqft

Stone:  
 Thassos honed  
 Ocean quartz leathered

## BLUE TRUE

*Lets be honest, blue never goes out of style especially in tile.*

FRESH START →

*Start your day with a dose of brilliant blue set off by sparkling white bursts. From breakfast nooks to baths, Lipton Blu gives you the best fresh start.*





## LIPTON COSSE



Unit: 12 1/16" x 11 15/16"  
Unit Yield: 1.01 sqft

Stone:  
Cosse honed

### ↙ DRAWING IT OUT

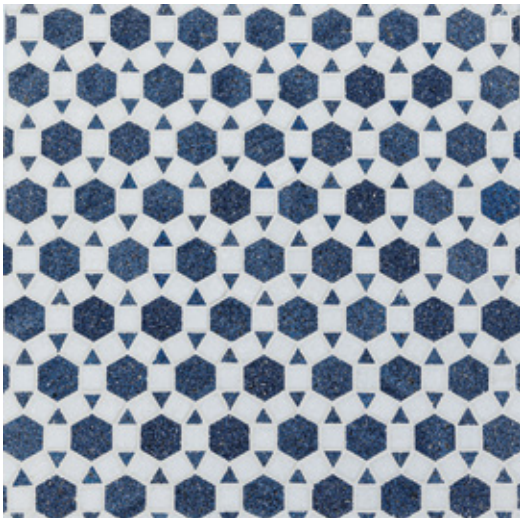
*The complex lines of Lipton are made up of triangles, squares and hexagons masterfully configured into a poetic repeat.*

STYLE IT OUT →  
*Spa style meets Boho  
in this naturally casual  
vignette. Contrasting  
natural woods with  
Lipton's new neutral  
colorway is the way to  
really make a statement.*





## MAURE BLU



Unit: 12 1/2" x 12 1/16"  
 Unit Yield: 1.06 sqft

Stone:  
 Cosse honed

### MORE MOORISH

*Evoking the decorative tiles of Spain, Maure is a subtle take on the decorative nature of geometries.*

FESTIVE FUSIONS →

*Try adding a weathered bold blue to your palette. Ocean quartz is a perfect offset to gold & bronze fixtures.*





## MAURE COSSE



Unit: 12 1/2" x 12 1/16"  
Unit Yield: 1.06 sqft

Stone:  
Cosse honed

### ↖ COSSE COOKS

*The full Cosse composition of Maure brings in all the right ingredients.*

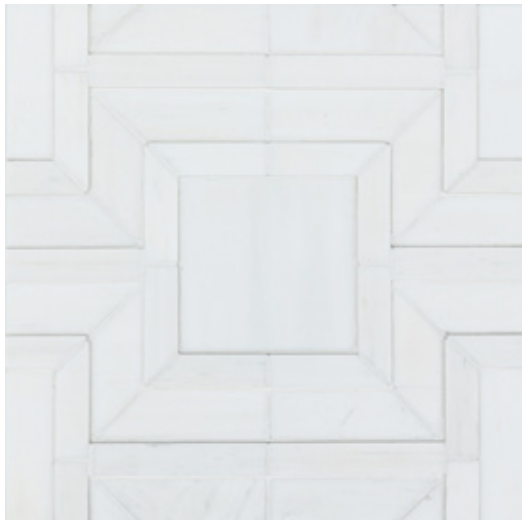
PEACEFUL PATTERN →

*Rest and relaxation are not just a state of mind. You can achieve these through good design. Maure's Cosse is meant to evoke the soothing appeal of well-worn surface. A place of refuge.*





## MEANDER SMALL BLANC



Unit: 13 13/16" x 8 15/16"  
Unit Yield: 0.86 sqft

Stone:  
Blanc honed

### GRAPHIC MODERN

*Meander is the perfect pattern for making a striking impact with its rectilinear forms & dimensional marble.*

CONTRAST CUES →

*Natural light cast on our proprietary dimensional marble can create depth and transform the pattern depending on the time of day.*





## MEANDER SMALL COSSE



Unit: 13 13/16" x 8 15/16"  
 Unit Yield: 0.86 sqft

Stone:  
 Cosse honed

↖ CREME FRESH

*Dimensional tile never looked so fresh as it does with Meander in Cosse.*

BREEZY BATH →  
*Depth and dimension  
can be a daunting design  
element. Not when  
Meander small Cosse is  
on the case. It seamlessly  
blends with the sun  
soaked scene accented  
perfectly by the 1 ¼”  
Cosse field mosaic.*





## MEANDER SMALL NOIR



Unit: 13 13/16" x 8 15/16"  
Unit Yield: 0.86 sqft

Stone:  
Noir honed

## CRISP COFFER

*The dimension of Meander Small gives a wink and a nod to the coffered ceilings of cathedrals of old reimagined for the modern era.*

BOLD & THE BEAUTIFUL →

*The smaller scale of this Meander pattern can take a small backsplash and make a big statement.*





## PARQUET BLANC



Unit: 12" x 11 15/16"  
Unit Yield: 0.99 sqft

Stone:  
Blanc honed  
Blanc leathered  
Blanc polished

↙ CASUAL & SOPHISTICATED  
*Inspired by the Parquet floors of Versailles this pattern knows how to work the room.*

WOW WEAVE →  
*Maison's Parquet Blanc is the perfect pattern for intricate weaving elements that don't overwhelm the project's composition.*





## PARQUET CREME



Unit: 12" x 11 15/16"  
Unit Yield: 0.99 sqft

Stone:  
Cosse honed  
Cosse leathered  
Cosse polished

### STONE STATEMENT

*To speak volumes, sometimes the most subtle of statements will do. Parquet in Cosse limestone says a lot without say much at all.*

BLOCK IT OUT →

*Parquet Crème is the pattern to use when you need something modular but still traditional in its lines. A block repeat that evokes the parquet flooring of a French chateau rendered in a crème limestone. Elegant and understated.*





## PARQUET NOIR



Unit: 12" x 11 15/16"  
 Unit Yield: 0.99 sqft

Stone:  
 Noir honed  
 Noir leathered  
 Noir polished

CASUAL & SOPHISTICATED  
*Inspired by the Parquet floors of Versailles this pattern knows how to work the room.*

FORM IN DINING →

*We have come a long way from formal dining spaces. Consider putting Parquet as your base if you are looking to make a statement. And that statement is "casual & sophisticated". Intricate patterning with the chic color palette of Noir finished in 3 ways.*





## RIO BLANC



Unit: 16 1/8" x 16 1/8"  
Unit Yield: 1.81 sqft

Stone:  
Blanc honed  
Blanc leathered  
Blanc polished  
Thassos honed  
Thassos leathered  
Thassos polished

### FLAMBOYANT FUN

*Can you hear the Samba music play?  
Rio takes you to Carnaval with it's  
festive forms.*

RE-PRISE →

*The large-scale repeat of Rio brings visual interest and unique interest to the humble mini brick. Maison is always finding new ways to revive and refresh the traditions of tile.*





## RIO CRÈME



Unit: 16 1/8" x 16 1/8"  
 Unit Yield: 1.81 sqft

Stone:  
 Cosse honed  
 Cosse leathered  
 Cosse polished

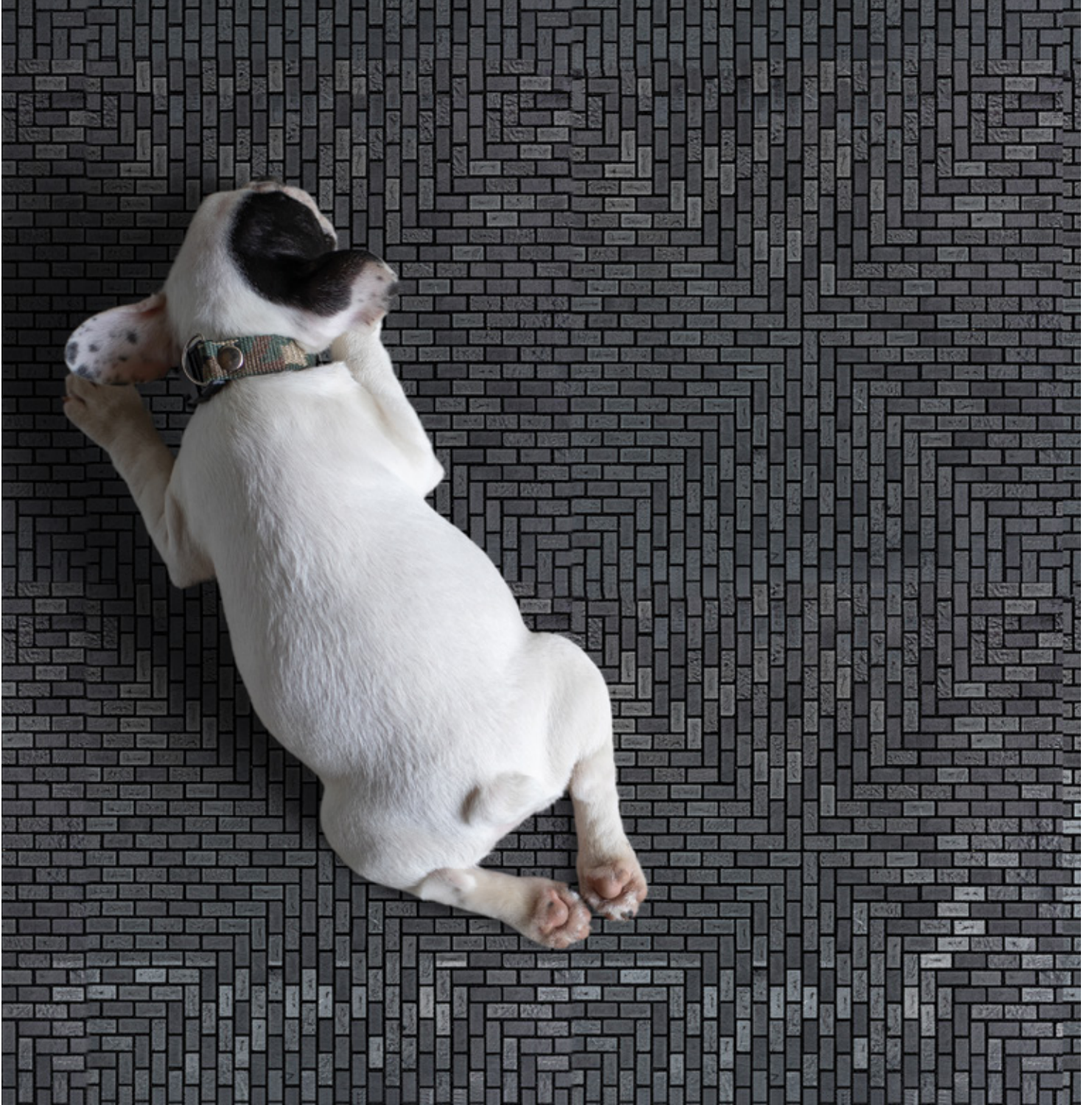
## EARTHEN EASE

*When you are looking for a natural texture to offset some verdant hues look no further than Rio Crème.*

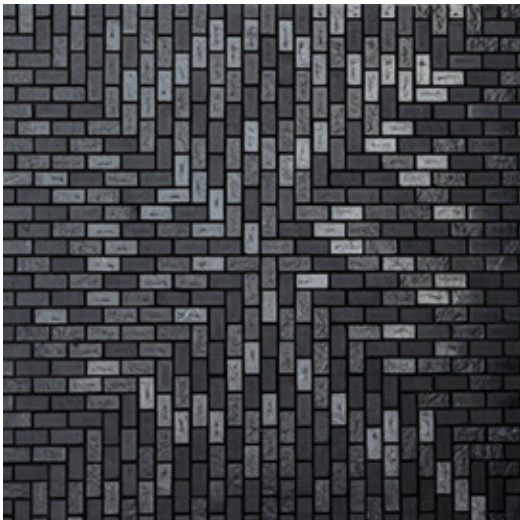
COUNTRY SIDE →

*Rio is a pattern set to offset any style you have planned for your home. Going from Boho to Country back to Beach Chic. Because of the simple mini brick shape laid in a unique turn, it's ready to be the well worn path you set out on.*





## RIO NOIR



Unit: 16 1/8" x 16 1/8"  
Unit Yield: 1.81 sqft

Stone:  
Noir honed  
Noir leathered  
Noir polished

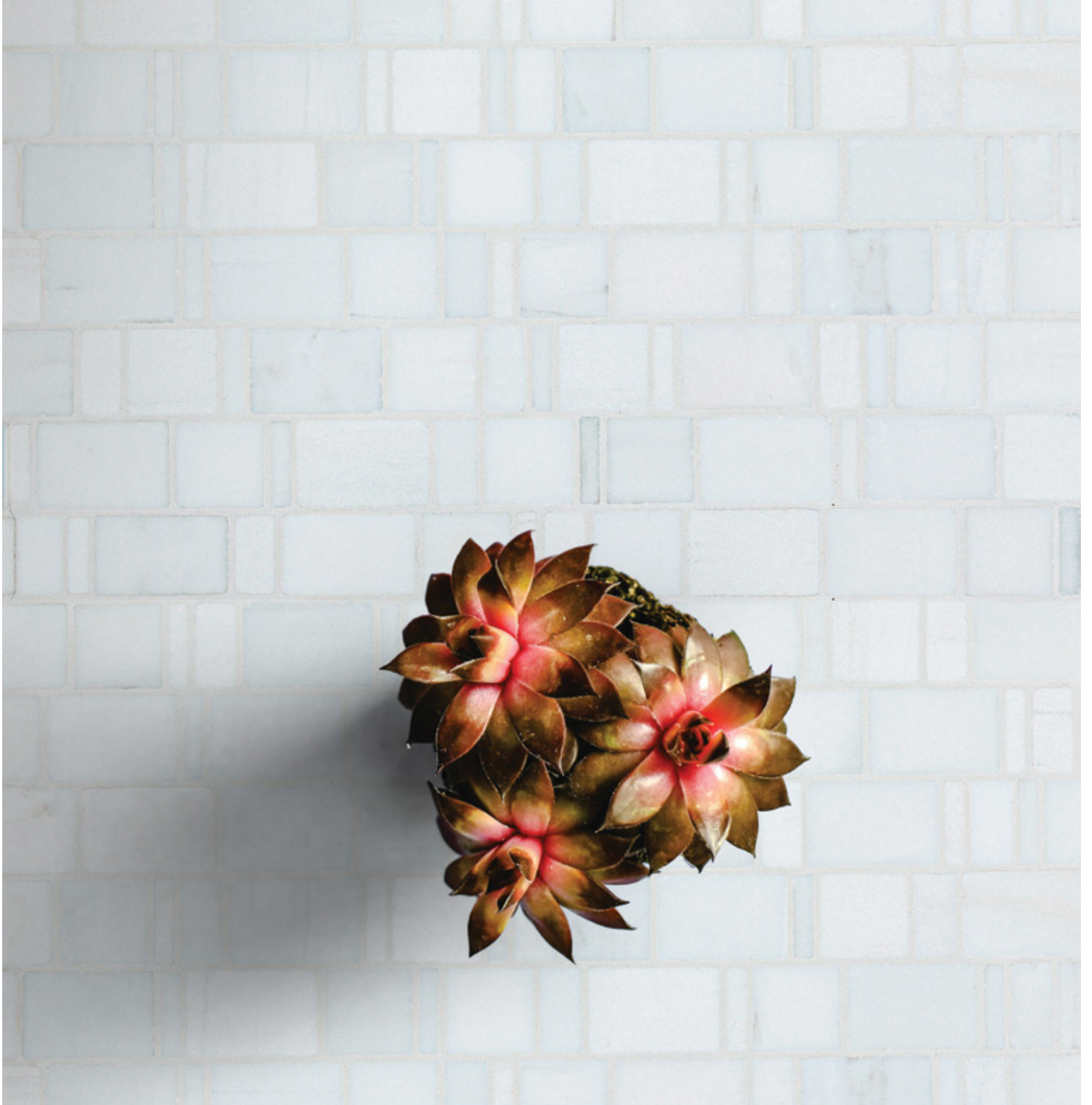
### NOIR NEW

*Blending honed, polished & leathered  
Noir marble lends the look to  
something completely novel.*

ROUSING REFRAIN →

*Repeating on a larger scale than most mosaics, Rio is perfect for sprawling installations or spaces that need to make a statement.*





## RONDELLE BLANC



Unit: 12 7/8" x 12"  
Unit Yield: 1.07 sqft

Stone:  
Cosse honed  
Cosse leathered  
Cosse polished

↖ DASHED OUT

*Rondelle Blanc leads lines of dash and dots of mini bricks and chips.*

LINE FRESH →

*The lineal nature of Rondelle works wonders on large expanses on both walls and floors. For bath's try taking the wall tile to the floor for even more continuity.*





# RONDELLE CREME



Unit: 12 7/8" x 12"  
Unit Yield: 1.07 sqft

Stone:  
Cosse honed  
Cosse leathered  
Cosse polished

## THE RIGHT MIX

*Rondelle Crème is the right blend of bricks to base your design recipe off of.*

GREAT START →

*A sun washed space begs to have a little fun with flooring. Installing Rondelle Crème will elevate this space making it a perfect place to start your morning.*





## RONDELLE NOIR



Unit: 12 7/8" x 12"  
 Unit Yield: 1.07 sqft

Stone:  
 Noir honed  
 Noir leathered  
 Noir polished

### FLAIR SQUARED

*The ebullience of Rondelle's mini bricks can add a little extra to any design.*

STONE STAPLES →

*There is no stone more elegant than black marble. Our beautiful Noir compliments a variety of styles and textures making it a must for any project intended to stand the test of time.*





## SALVADOR BLU



Unit: 9 7/16" x 10 11/16"  
Unit Yield: 0.70 sqft

Stone:  
Thassos honed  
Ocean quartz leathered

### ZIG OR ZAG

*A chevron of Ocean quartz & Thassos marble can take your design in any direction.*

FLOOR WORK →

*Tile designs with dense repeats and strong lines can go beyond the traditional accent placements and fine a home on floors and walls.*





## SALVADOR CREME



Unit: 9 7/16" x 10 11/16"  
Unit Yield: 0.70 sqft

Stone:  
Thassos honed  
Cosse honed

### STUDIO SHAPES

*Salvador hails from our Studio Shapes collection. Patterns made from multiple shapes. Squares and mini bricks constitute this iconic design.*

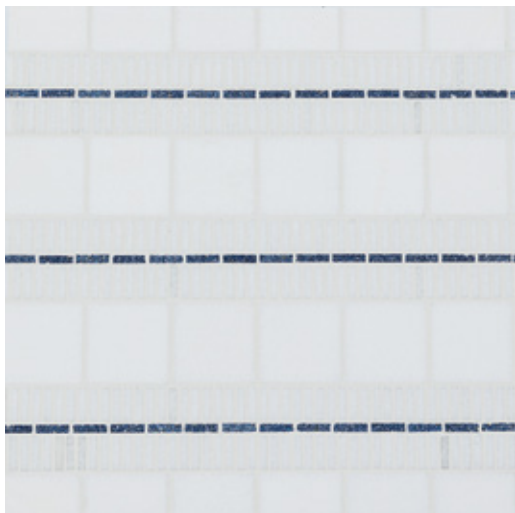
SURREAL SERENE →

*With the high tensions of modern life we all deserve an oasis. Clear and calm doesn't have to mean boring though. Add some pizzazz with a playful chevron.*





## SIGRID BLU



Unit: 11 5/8" x 11 3/4"  
 Unit Yield: 0.95 sqft

Stone:  
 Thassos honed  
 Ocean quartz leathered

↖ BEAUTIFUL BLUE  
*Timeless blue cabinetry pairs perfectly with Sigrid Blu.*

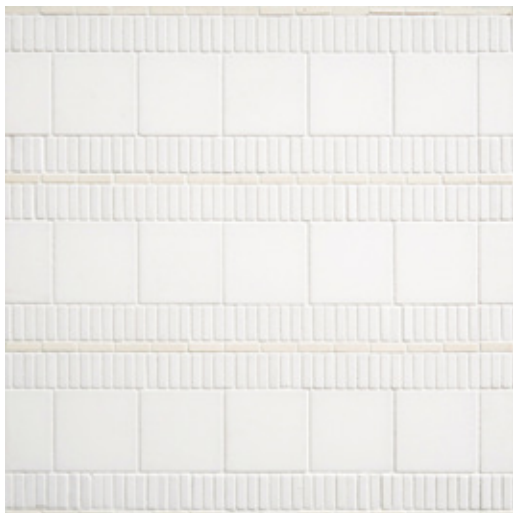
NAVY SHIP →

*Fall in love with the nautical inspired color palette of Sigrid Blu. The perfect blend of intricate micro mosaic chips & ribbon like accents of Ocean quartz leathered.*





## SIGRID CREME



Unit: 11 5/8" x 11 3/4"  
Unit Yield: 0.95 sqft

Stone:  
Thassos honed  
Cosse honed

### GUSTO & GRIT

*With all the enthusiasm of a parade the linear stacks and tracks of Sigrid's mini bricks and squares texturize your surfaces without committing to too much fuss.*

RUNWAY TO ROOM →

*High fashion doesn't always come in the form of clothes & accessories. Consider tile a statement piece. Show yourself & you guest how fashionable you really are.*





## THERA BLANC



Unit: 13" x 13"  
Unit Yield: 1.17 sqft

Stone:  
Blanc honed  
Blanc polished

### CHIC CHECK

*Thera may be inspired by ancient patterning but can complement the sleekest of projects.*

TENDING TIME →  
*Some tile trends transcend time. The meandering folds of Thera serve style that can blend in or stand out, depending on how you style the room.*





## THERA CRÈME



Unit: 13" x 13"  
Unit Yield: 1.17 sqft

Stone:  
Cosse honed  
Cosse polished

### STEP BY STEP

*The stepped & staged repeat of Thera Crème is the mosaic equivalent of a daydream.*

COVER ALLS →

*Some patterns are so good that they cannot be limited to one surface. The trend of taking your flooring to the wall or your wall tile to the floor is one we fully support. There is the pattern that plays a strong note no matter where you apply her.*





## THERA NOIR



Unit: 13" x 13"  
Unit Yield: 1.17 sqft

Stone:  
Noir honed  
Noir polished

### NEW CLASSIC

*The fresh all Noir marble of Thera allows a pattern, traditionally complicated, to be complimentary & modern.*

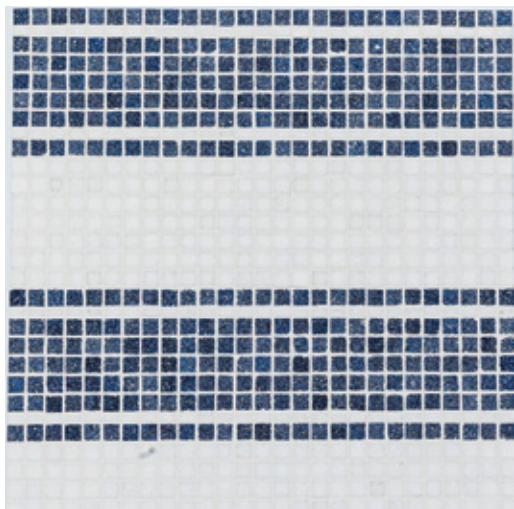
TIMELY TREND →

*Old is new with the classically Greek patterning of Thera. Curated from our Trends collection this pattern is plucked from time but still ahead of the trends.*





## TOBY BLU



Unit: 11 15/16" x 12 1/16"  
Unit Yield: 1.00 sqft

Stone:  
Thassos honed  
Ocean quartz leathered

### WOW ROOM

*Fall in trend with a powder room that wows the guest with bold lines of Toby Blu.*

FRESH IN →  
*You can always squeeze more style into a project. Try adding a traditional stripe with modern textures such as Toby Blu. The brilliance of our Ocean quartz keeps any scene fresh.*





## TOBY CREME



Unit: 11 15/16" x 12 1/16"  
Unit Yield: 1.00 sqft

Stone:  
Thassos honed  
Cosse honed

## LOVELY LINEAL

*Get in line with Toby. Spanning from Boho to Soho style, this directional pattern can take you where you want to go.*

TRENDSETTING →

*Lines and texture are in. Add this trend to your space in unique ways. Consider this beautiful neutral for both the floor & walls.*





## WEAVE 8 BLANC



Unit: 12 5/8" x 13 3/8"  
Unit Yield: 1.17 sqft

Stone:  
Cosse honed

### CRISP LINE

*The classic overlaps of Weave 8 allow this soaking tub to take center stage.*

TASTE TIME →  
*Find Weave 8 Blanc  
either serving as the  
base of a project  
composition or adding  
a much needed layer of  
texture.*





## WEAVE 8 CREME



Unit: 12 5/8" x 13 3/8"  
Unit Yield: 1.17 sqft

Stone:  
Cosse honed

↖ WARP TO WEFT

*Weave 8 Crème is a woven vision of Cosse limestone in the perfect honed finish.*

STEP OUT →

*Plant your feet on Weave Crème when stepping out of your soaking tub. This is a limestone mosaic suited for spas & baths due to its durability and beauty.*





## WEAVE 8 NOIR



Unit: 12 5/8" x 13 3/8"  
Unit Yield: 1.17 sqft

Stone:  
Noir honed

### TEX-TILE

*The intricate threads of Weave 8 tell a tale of a traditional form reworked with contemporary style.*

GATHER HERE →

*The fresh bold take on a traditional woven form is exactly what this dining room needed. Sophisticated but not fussy.*



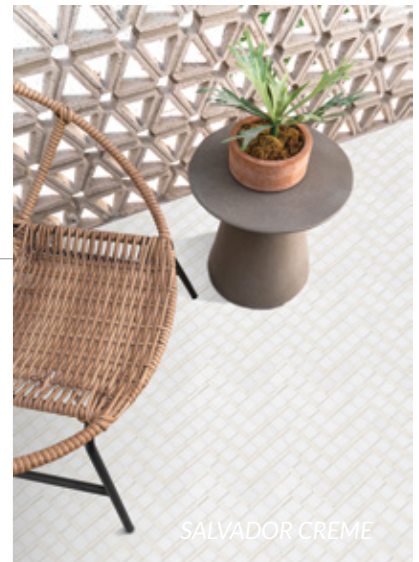
# CREATIVE CURATED CRAFTED

## STYLE & INNOVATION

Maison Surface creates distinctive artisan tile designs—from sophisticated and classic to wildly avant-garde—but what makes us different is the ingenuity to bring them to reality. We cultivate techniques and styles from around the world, developing innovative production methods and finishing standards through our global factory partnerships. For creative designers and luxury showrooms, we're the rarest of surface design studios: combining a unique palette of materials, colors, and finishes with outstanding sourcing and project management.



THERA BLANC



SALVADOR CREME



MAISONSURFACE



TOBY BLU



maisonsurface.com



*RIO NOIR*

## MAKING A LASTING IMPRESSION

Have your home be a showcase. Maison offers tile design that will inspire your style. See our full list of designs at [MaisonSurface.com](https://www.MaisonSurface.com).



maisonsurface.com



CREATIVE CURATED CRAFTED

The Art of Maison is the ability to see possibilities where functionality & creativity intersect. | [maisonsurface.com](http://maisonsurface.com)