

# MAISON



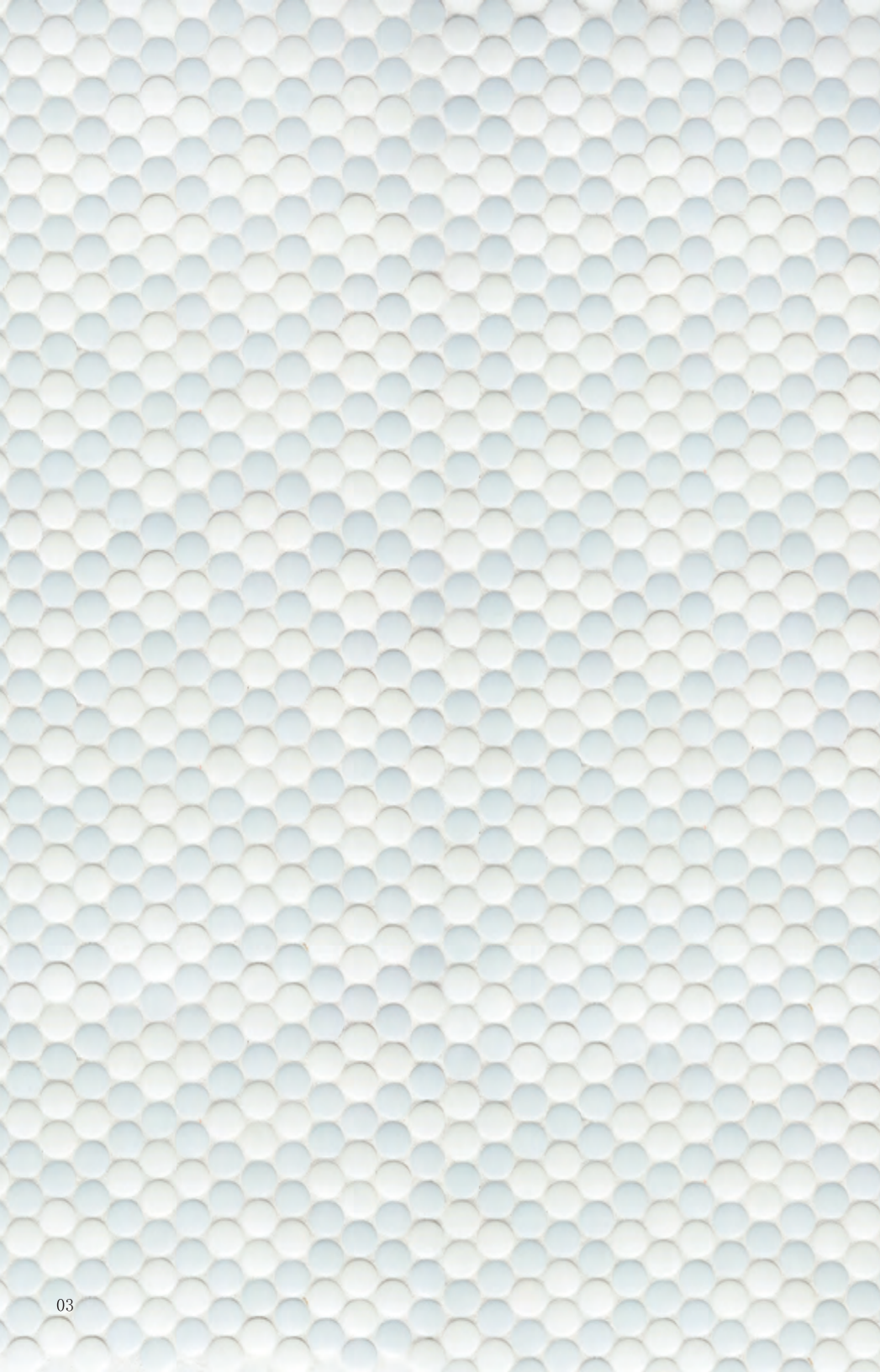
Union Station



# Union Station in C3 3/4"

rectified edge Recycled glass



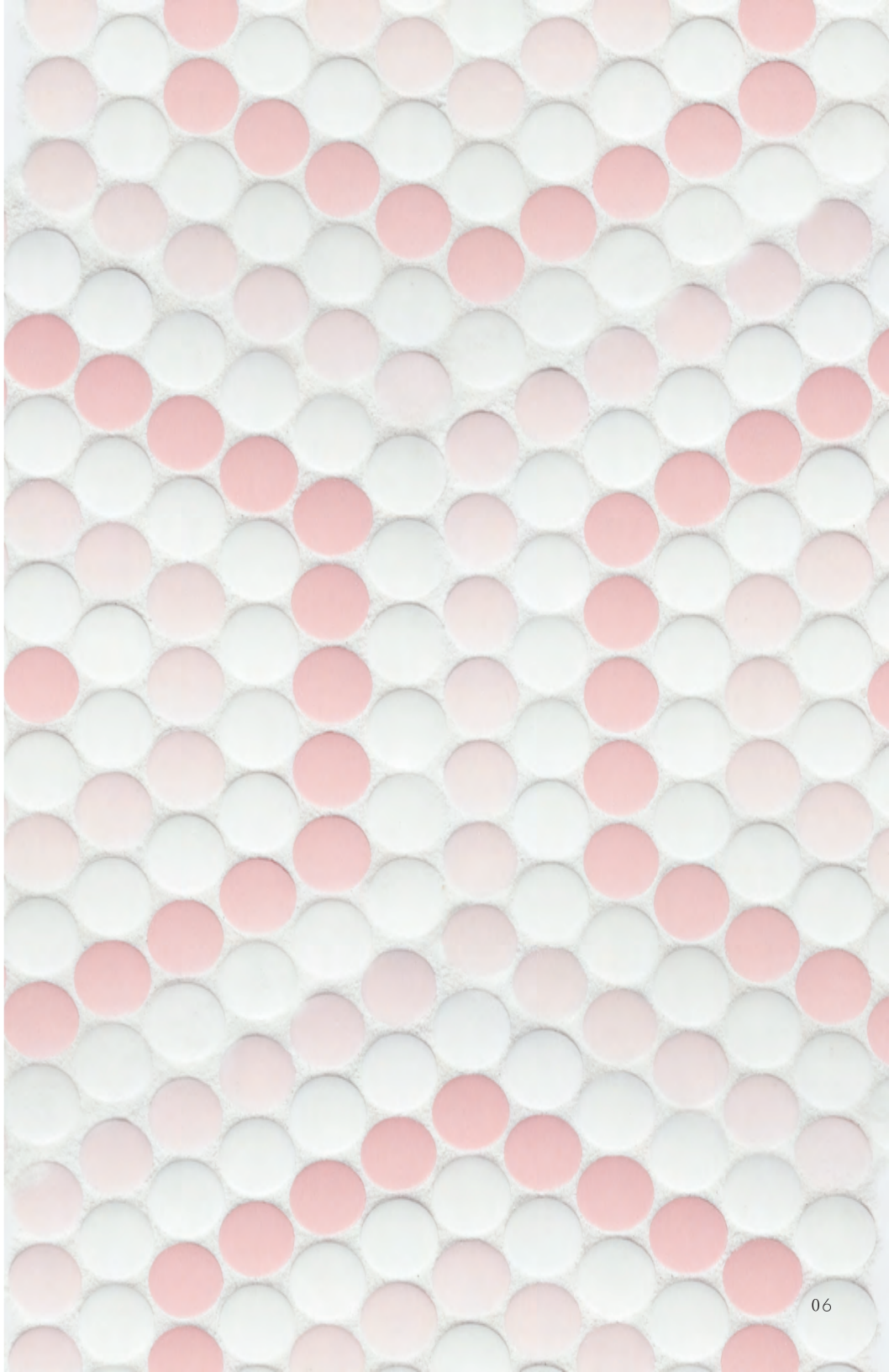


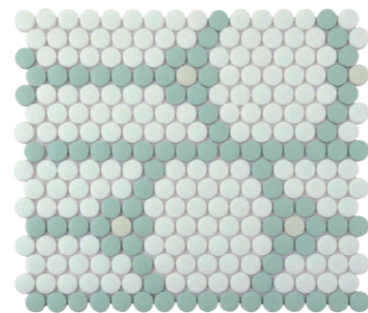
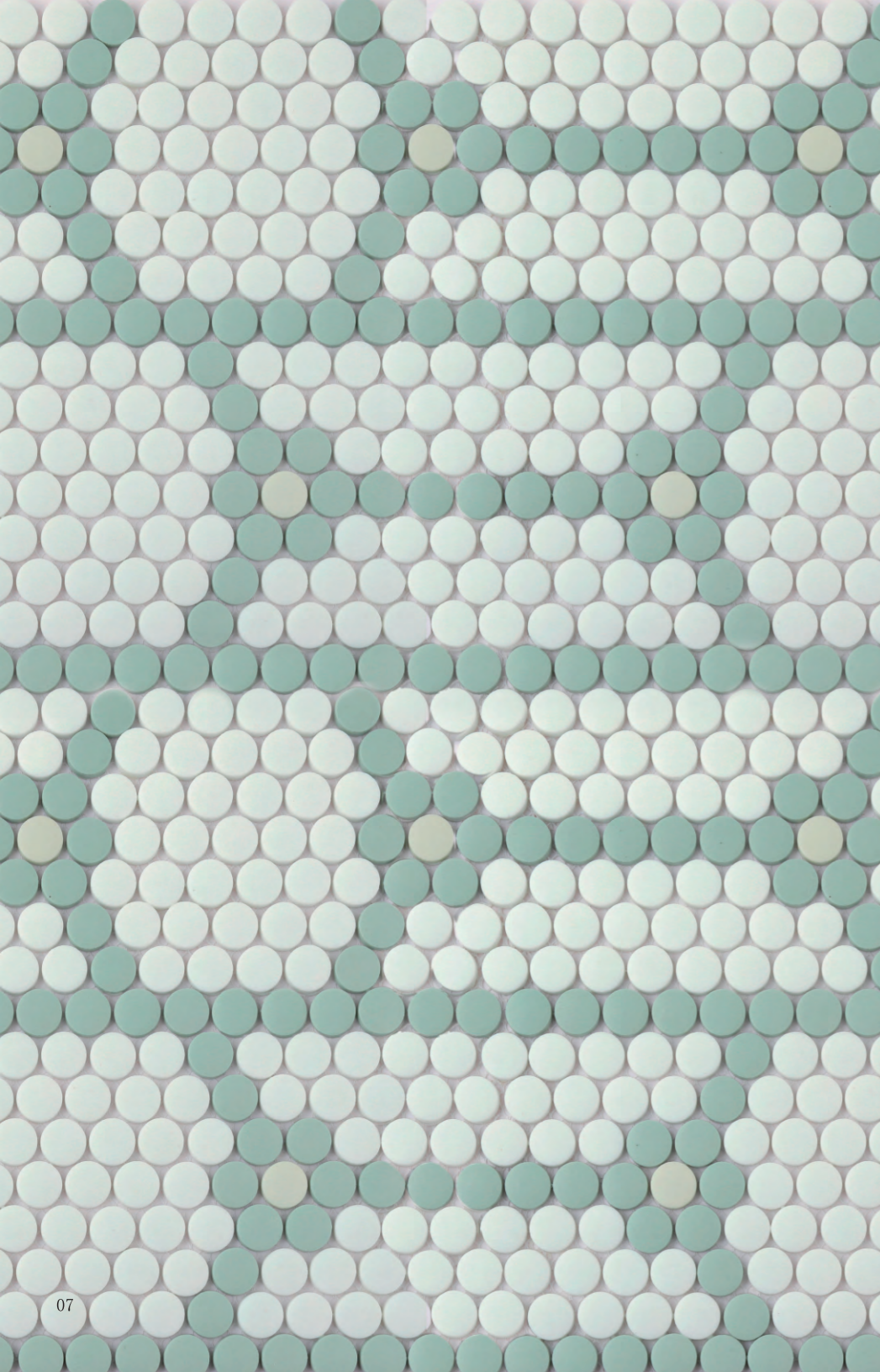
Antwerp  
Cloud - Mist  
Unit: 14 7/8" x 10 13/16" Piece size: Circle 3/4"  
Unit Yield: 1.12 sqft Sheets per box: 10  
Yield per box: 11.19 sqft Pallet Yield: 906.32 sqft





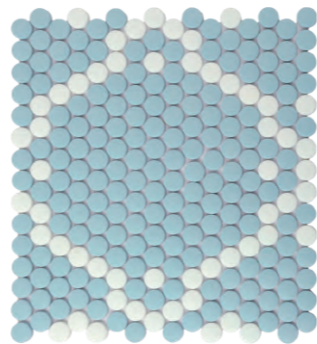
Bank  
 Cloud - Bloom - Petal  
 Unit: 9 7/8" x 8 11/16"  
 Unit Yield: 0.59 sqft  
 Yield per box: 5.94 sqft  
 Piece size: Circle 3/4"  
 Sheets per box: 10  
 Pallet Yield: 481.45 sqft



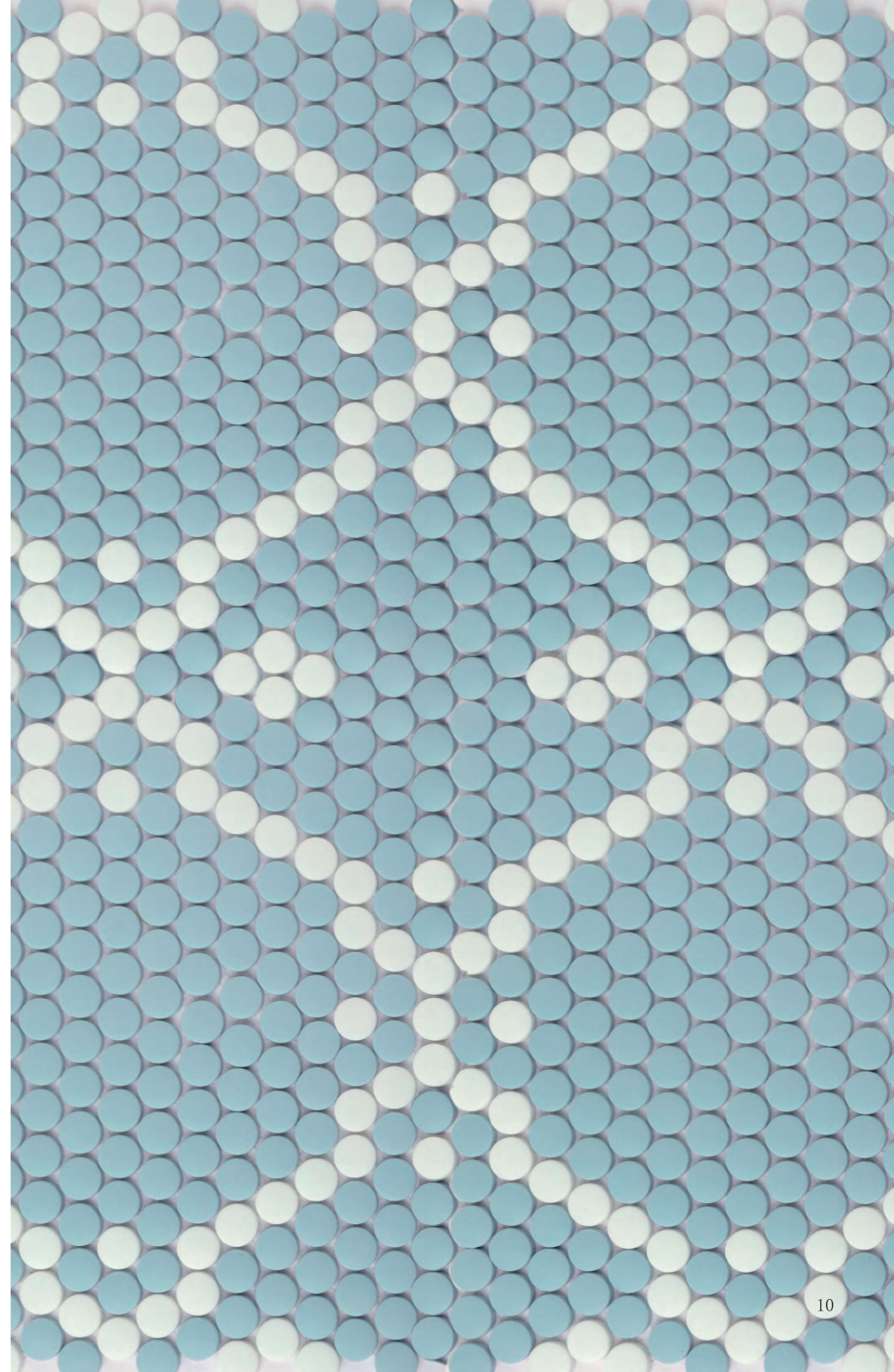


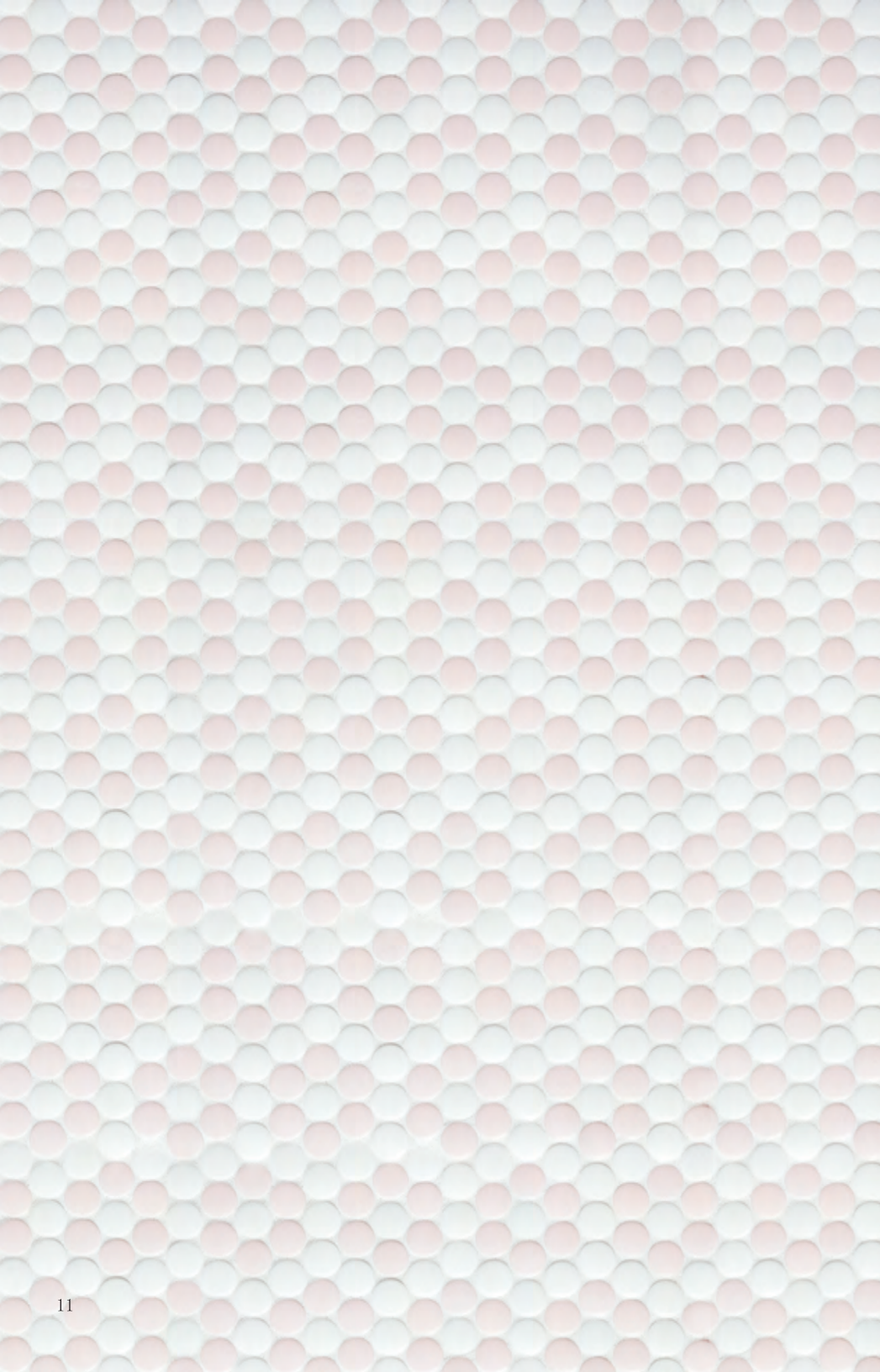
Baskin  
Cloud - Thyme - Canvas  
Unit: 11 9/16" x 13 3/16" Piece size: Circle 3/4"  
Unit Yield: 1.06 sqft Sheets per box: 10  
Yield per box: 10.57 sqft Pallet Yield: 855.79 sqft



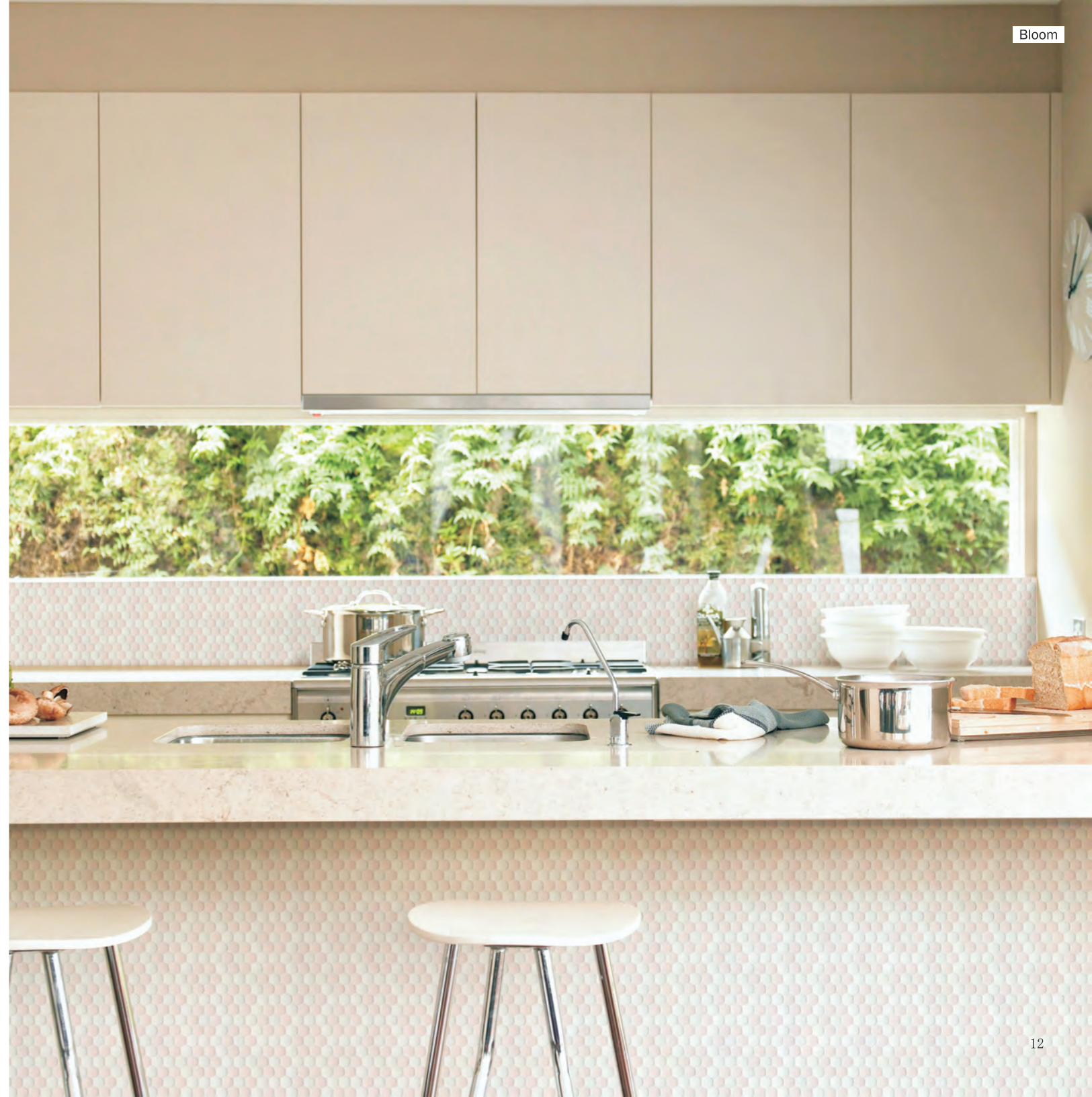


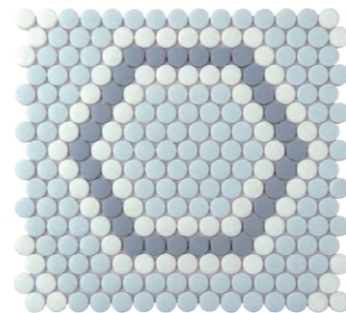
Belle  
 Oslo - Cloud  
 Unit: 11 9/16" x 12 3/8"    Piece size: Circle 3/4"  
 Unit Yield: 0.99 sqft        Sheets per box: 10  
 Yield per box: 9.93 sqft     Pallet Yield: 804.70 sqft





**Bloom**  
Cloud - Petal - Salt  
Unit: 14 13/16" x 11 9/16" Piece size: Circle 3/4"  
Unit Yield: 1.19 sqft Sheets per box: 10  
Yield per box: 11.89 sqft Pallet Yield: 963.08 sqft

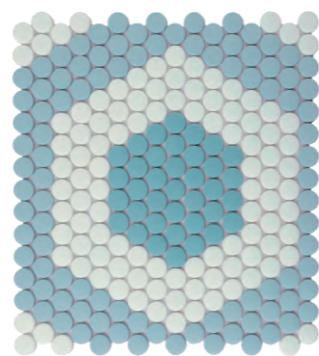
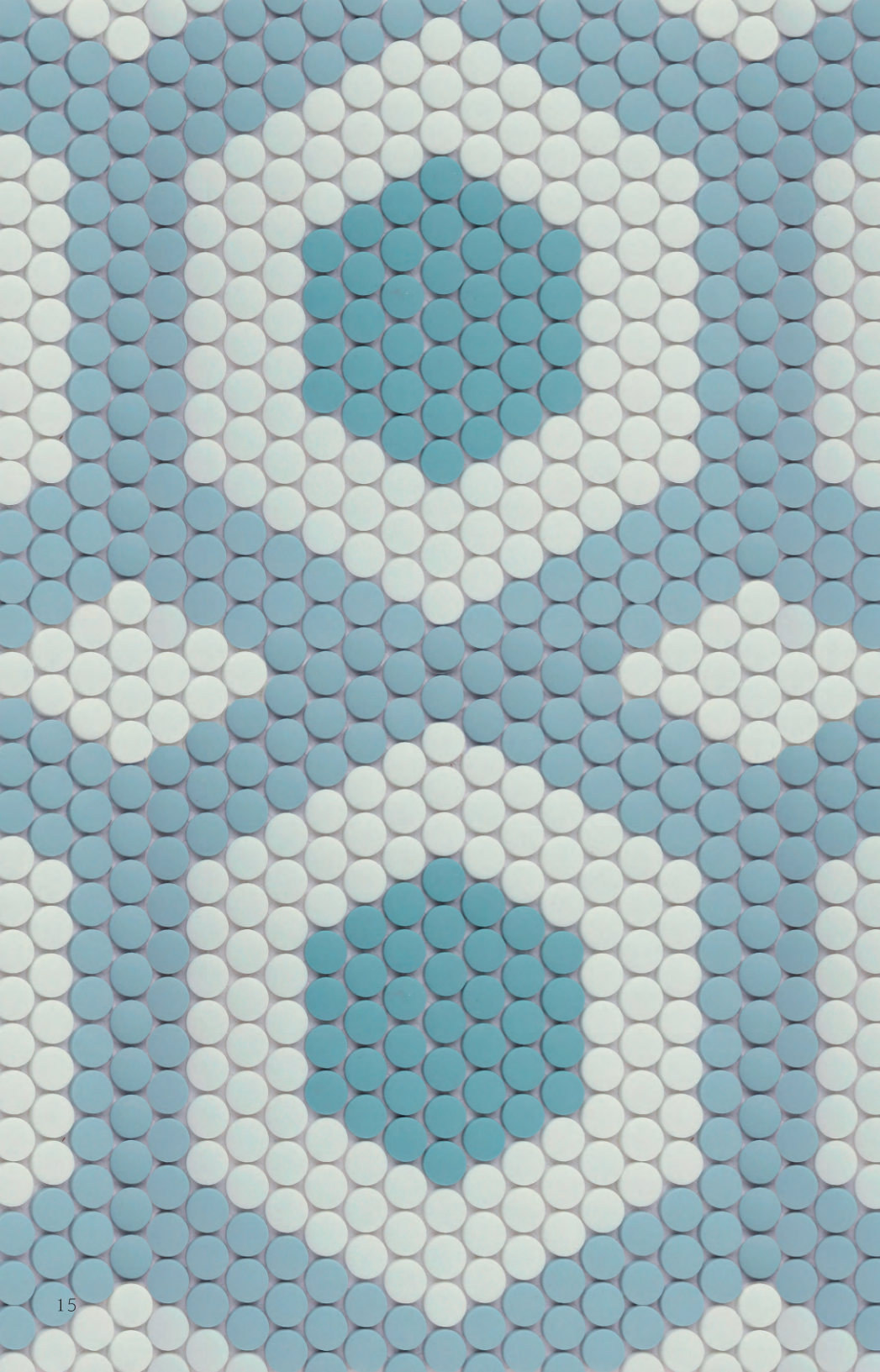




Camden  
 Mist - Cloud - Steel  
 Unit: 12 3/8" x 11 9/16"    Piece size: Circle 3/4"  
 Unit Yield: 0.99 sqft    Sheets per box: 10  
 Yield per box: 9.93 sqft    Pallet Yield: 804.70 sqft

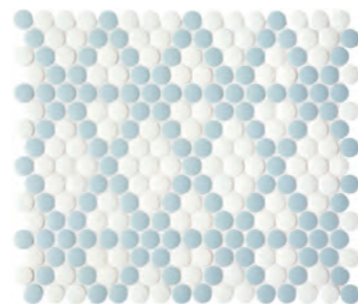
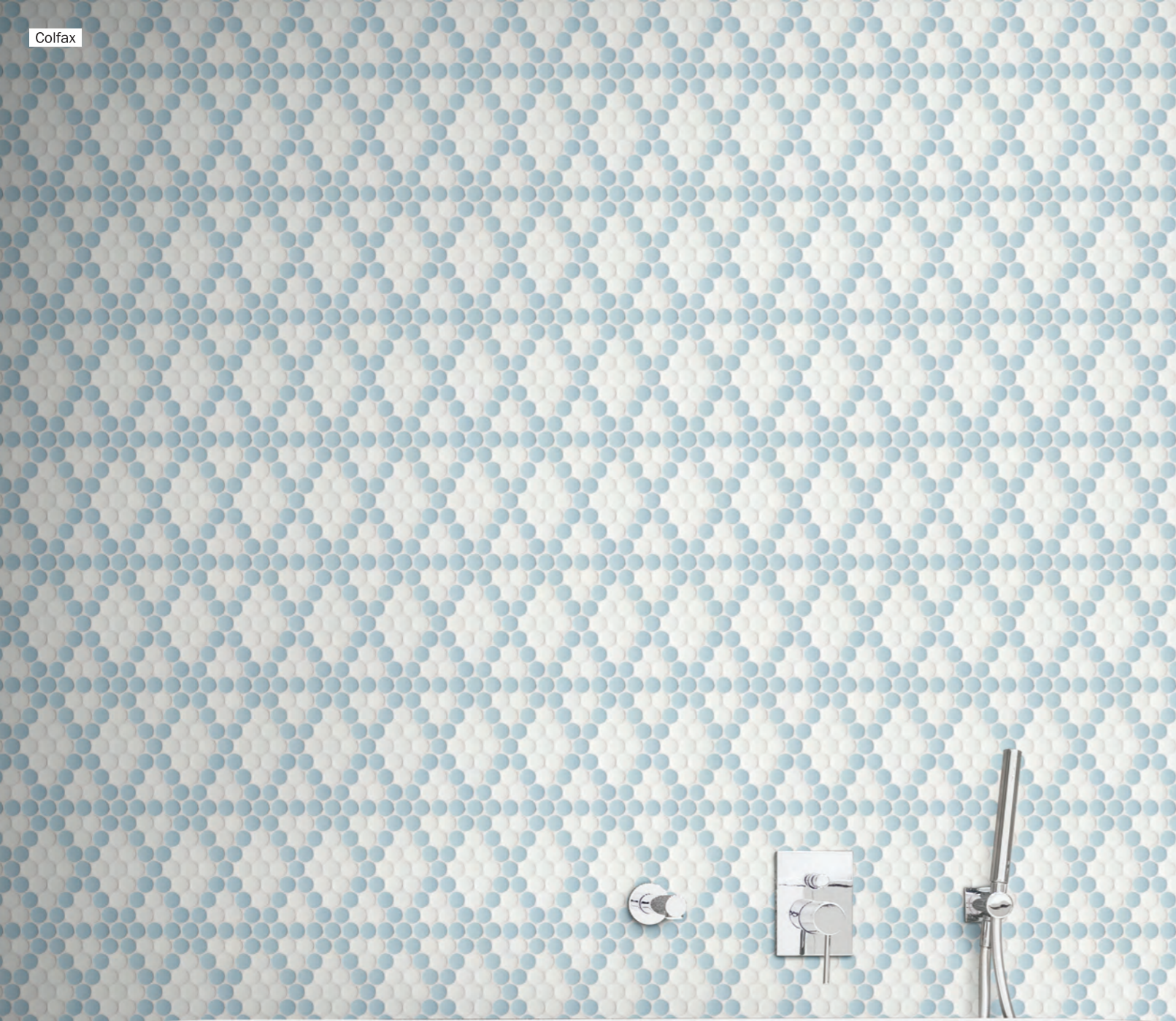




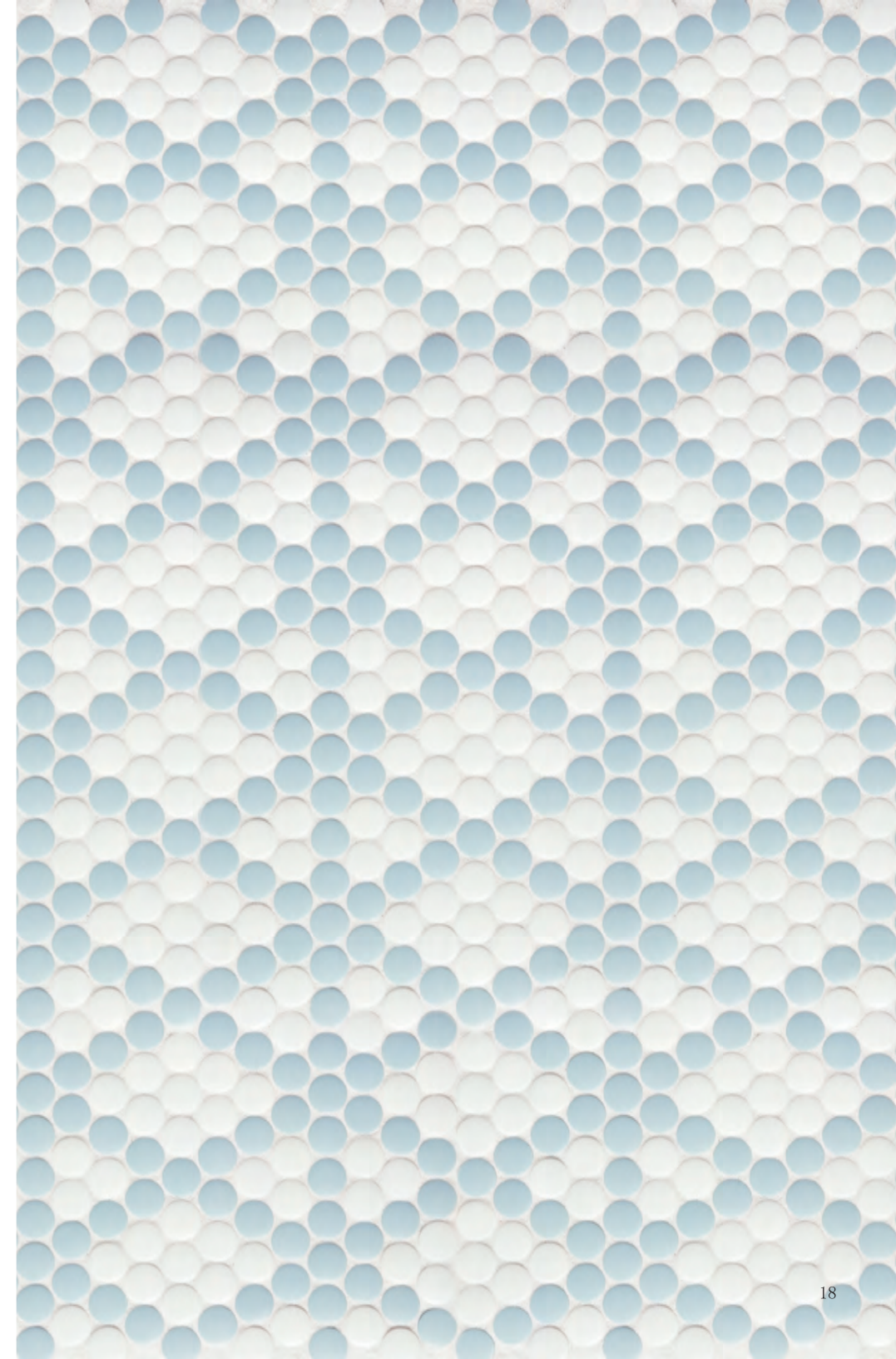


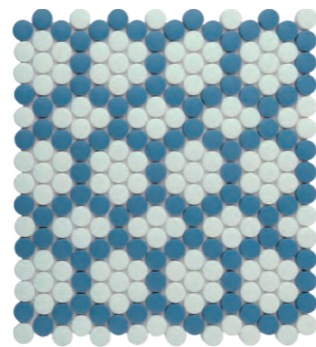
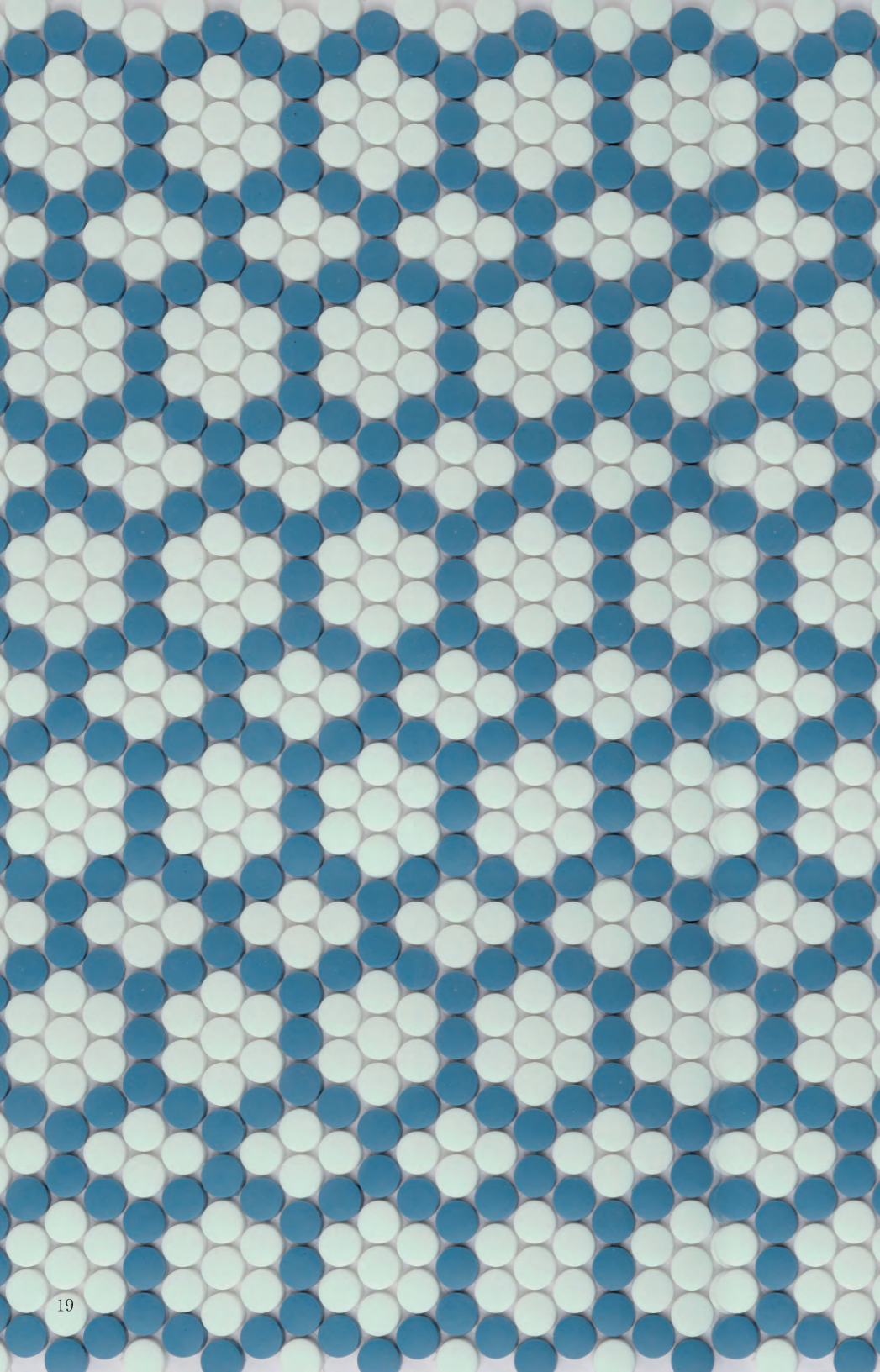
Centre  
Cloud - Oslo - Rain  
Unit: 11 9/16" x 12 3/8"  
Unit Yield: 0.99 sqft  
Yield per box: 9.93 sqft  
Piece size: Circle 3/4"  
Sheets per box: 10  
Pallet Yield: 804.70 sqft





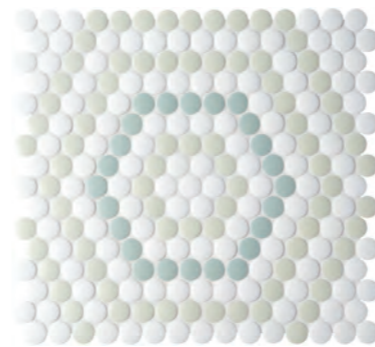
Colfax  
 Cloud - Oslo  
 Unit: 13 3/16" x 11 9/16"    Piece size: Circle 3/4"  
 Unit Yield: 1.06 sqft        Sheets per box: 10  
 Yield per box: 10.57 sqft    Pallet Yield: 855.79 sqft



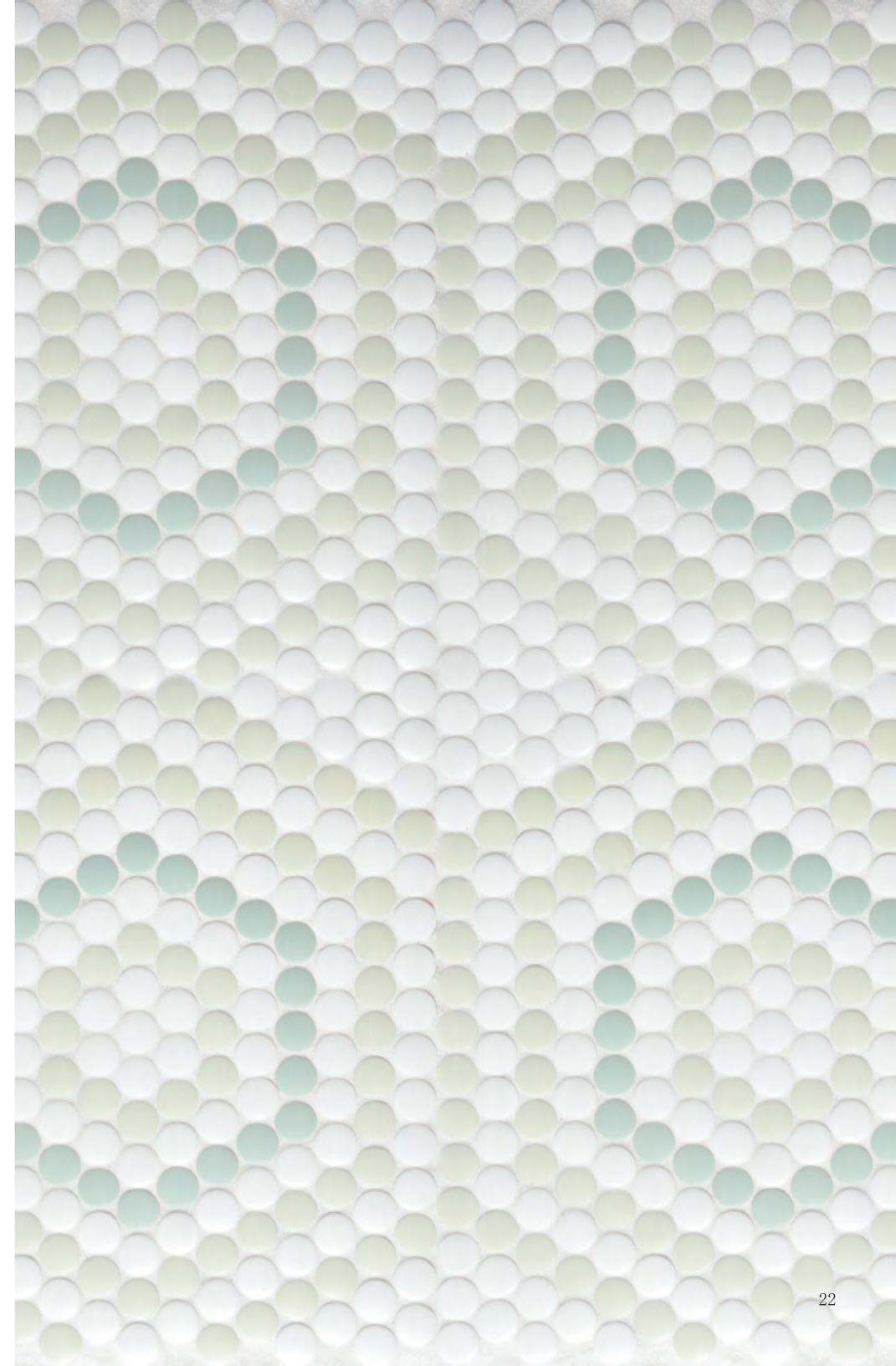


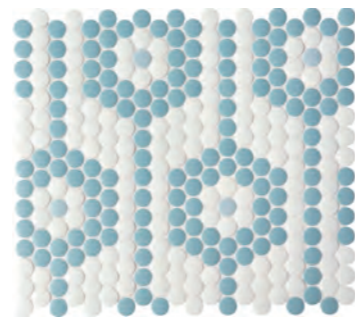
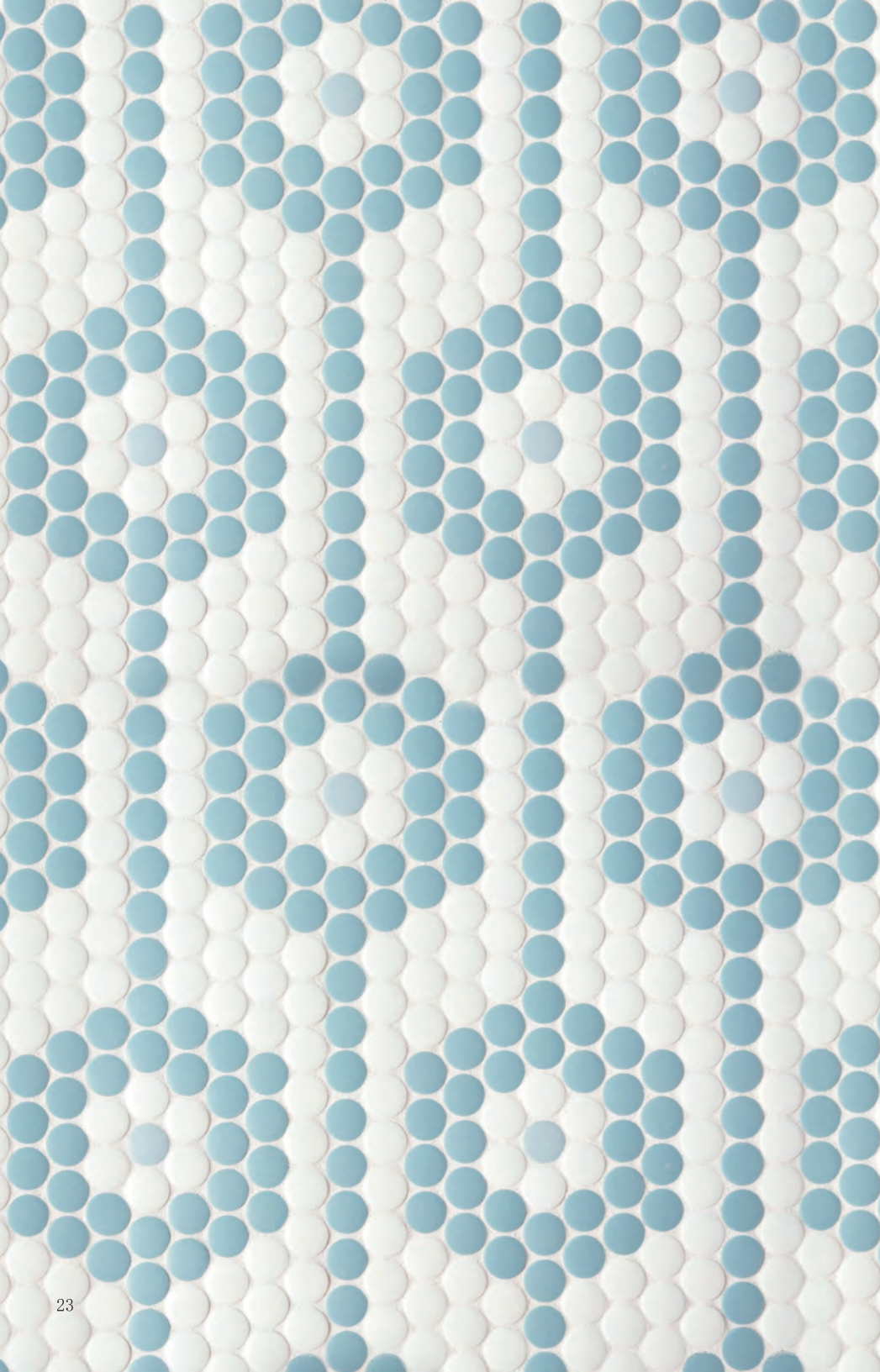
Ferro  
Cloud - Slate  
Unit: 11 9/16" x 12 3/8"    Piece size: Circle 3/4"  
Unit Yield: 0.99 sqft    Sheets per box: 10  
Yield per box: 9.90 sqft    Pallet Yield: 802.14 sqft





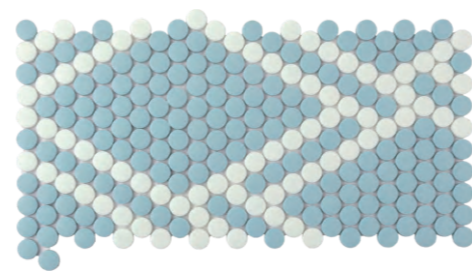
Grande  
 Cloud - Thyme - Canvas  
 Unit: 11 9/16" x 12 3/8"    Piece size: Circle 3/4"  
 Unit Yield: 0.99 sqft    Sheets per box: 10  
 Yield per box: 9.90 sqft    Pallet Yield: 802.14 sqft





Holland  
Cloud - Rain - Oslo  
Unit: 14 7/16" x 12 3/8"    Piece size: Circle 3/4"  
Unit Yield: 1.24 sqft    Sheets per box: 10  
Yield per box: 12.37 sqft    Pallet Yield: 1002.00 sqft





Hudson

Oslo - Cloud

Unit: 8 1/4" x 17 5/16"

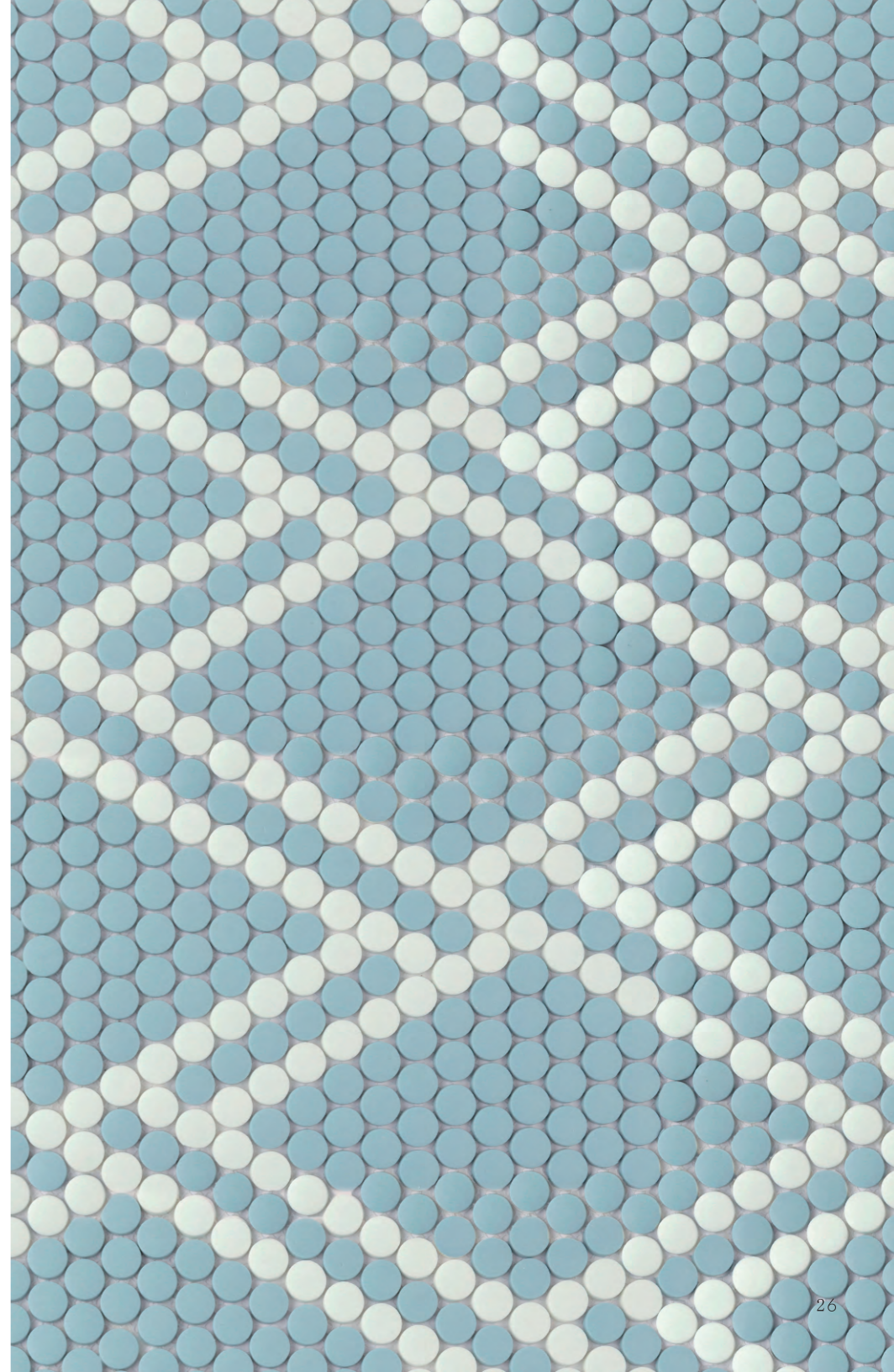
Unit Yield: 0.99 sqft

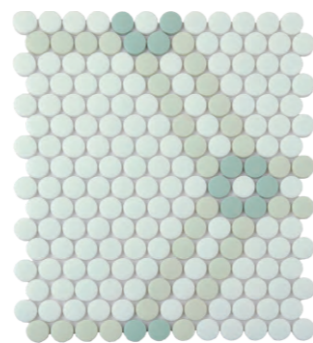
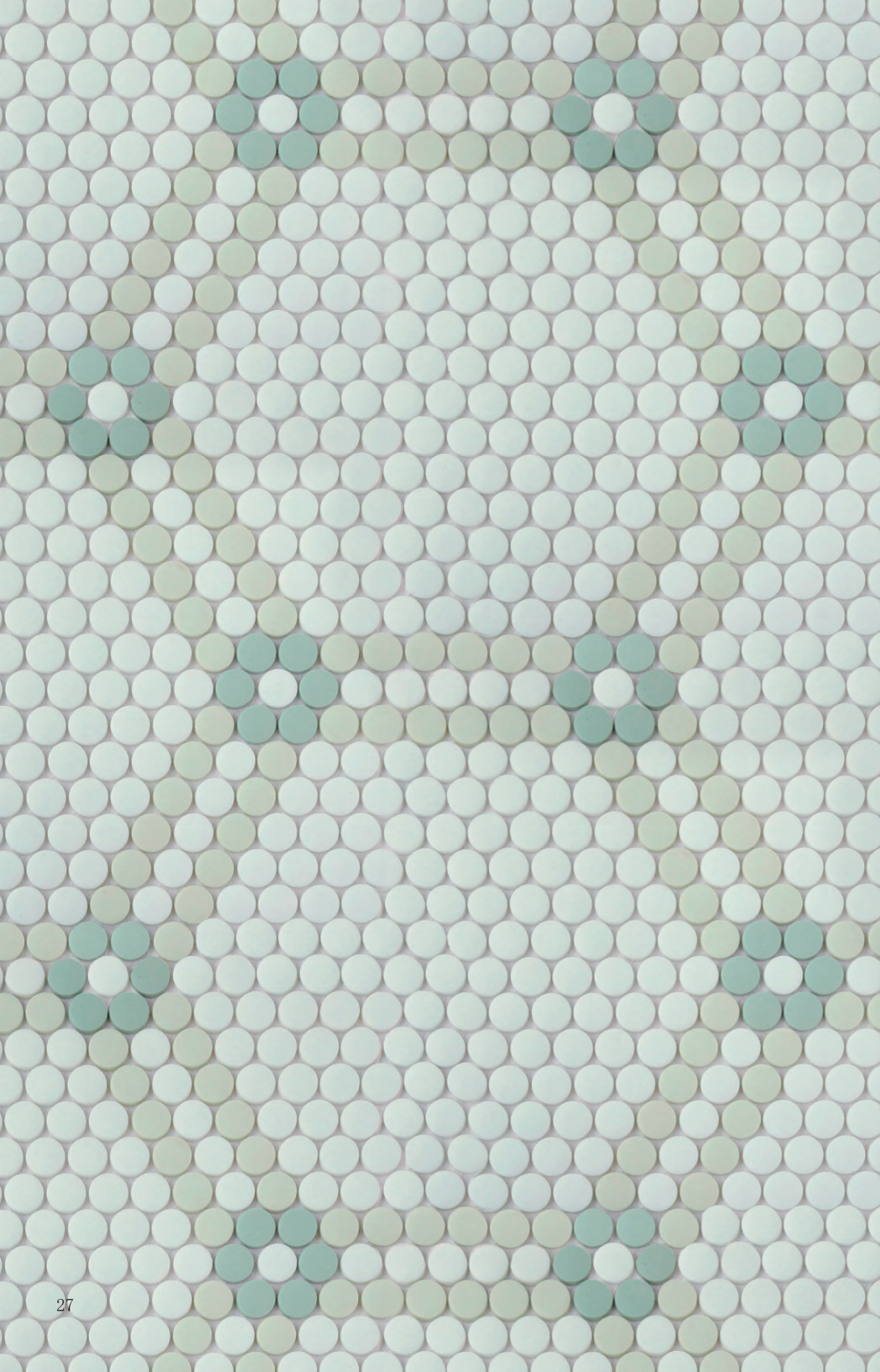
Yield per box: 9.88 sqft

Piece size: Circle 3/4"

Sheets per box: 10

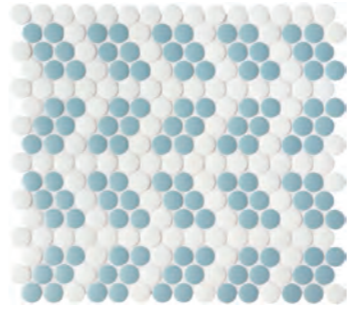
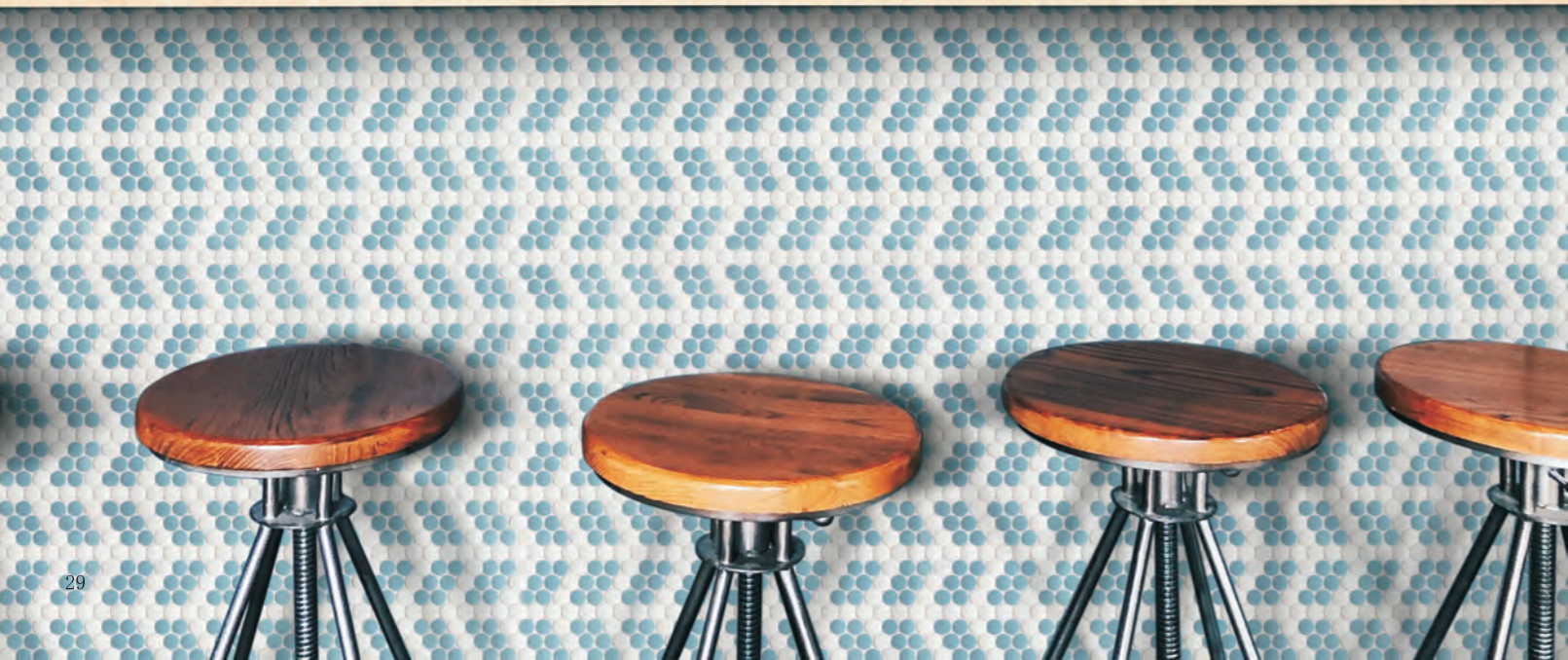
Pallet Yield: 799.96 sqft



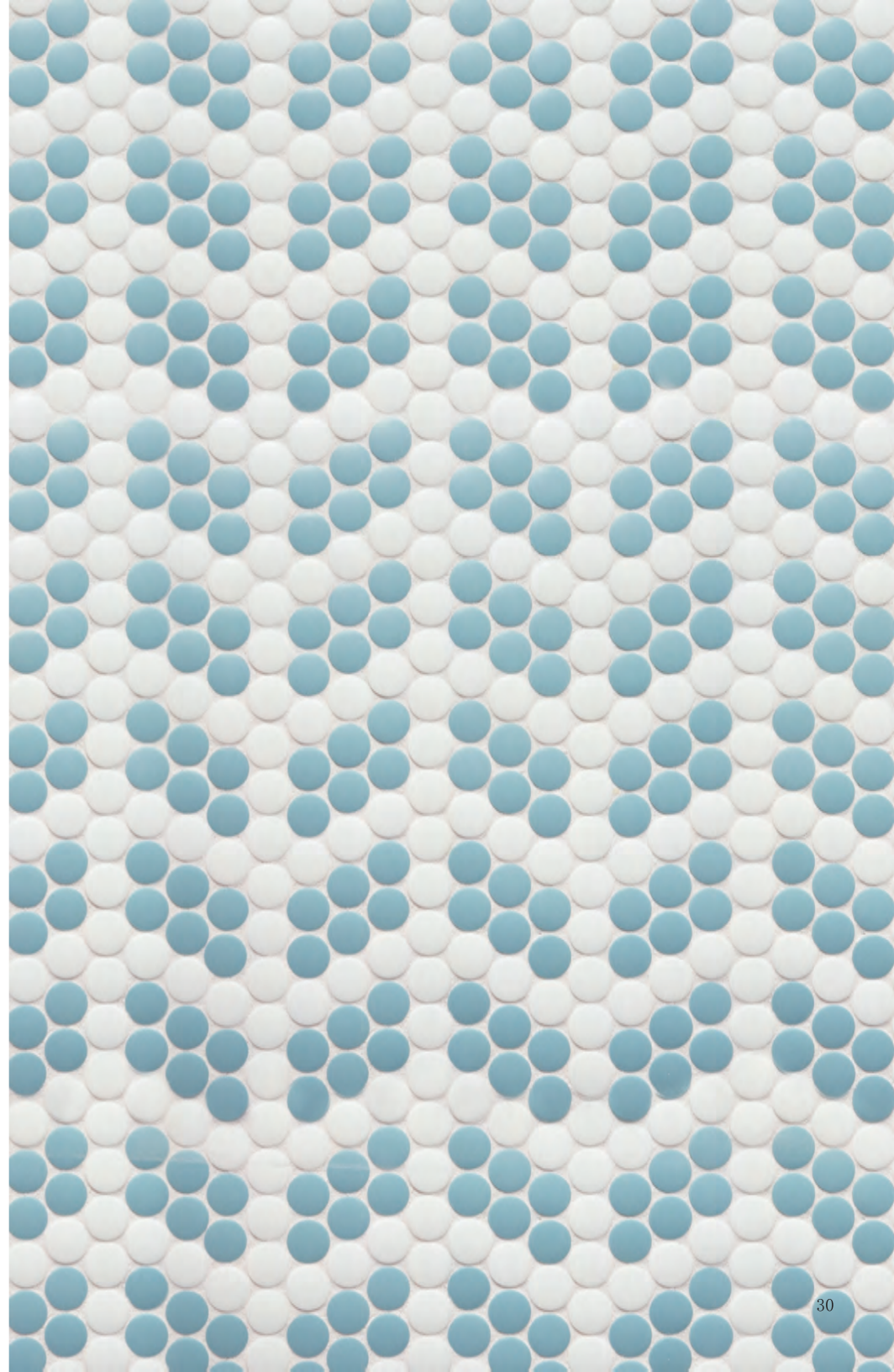


Monroe  
Cloud - Canvas - Thyme  
Unit: 9 7/8" x 11 9/16"  
Unit Yield: 0.79 sqft  
Yield per box: 7.92 sqft  
Piece size: Circle 3/4"  
Sheets per box: 10  
Pallet Yield: 641.20 sqft

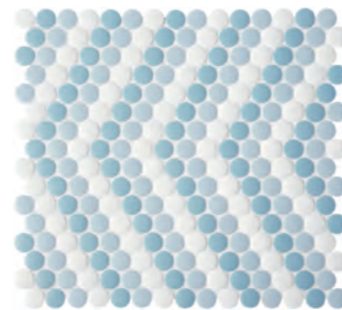
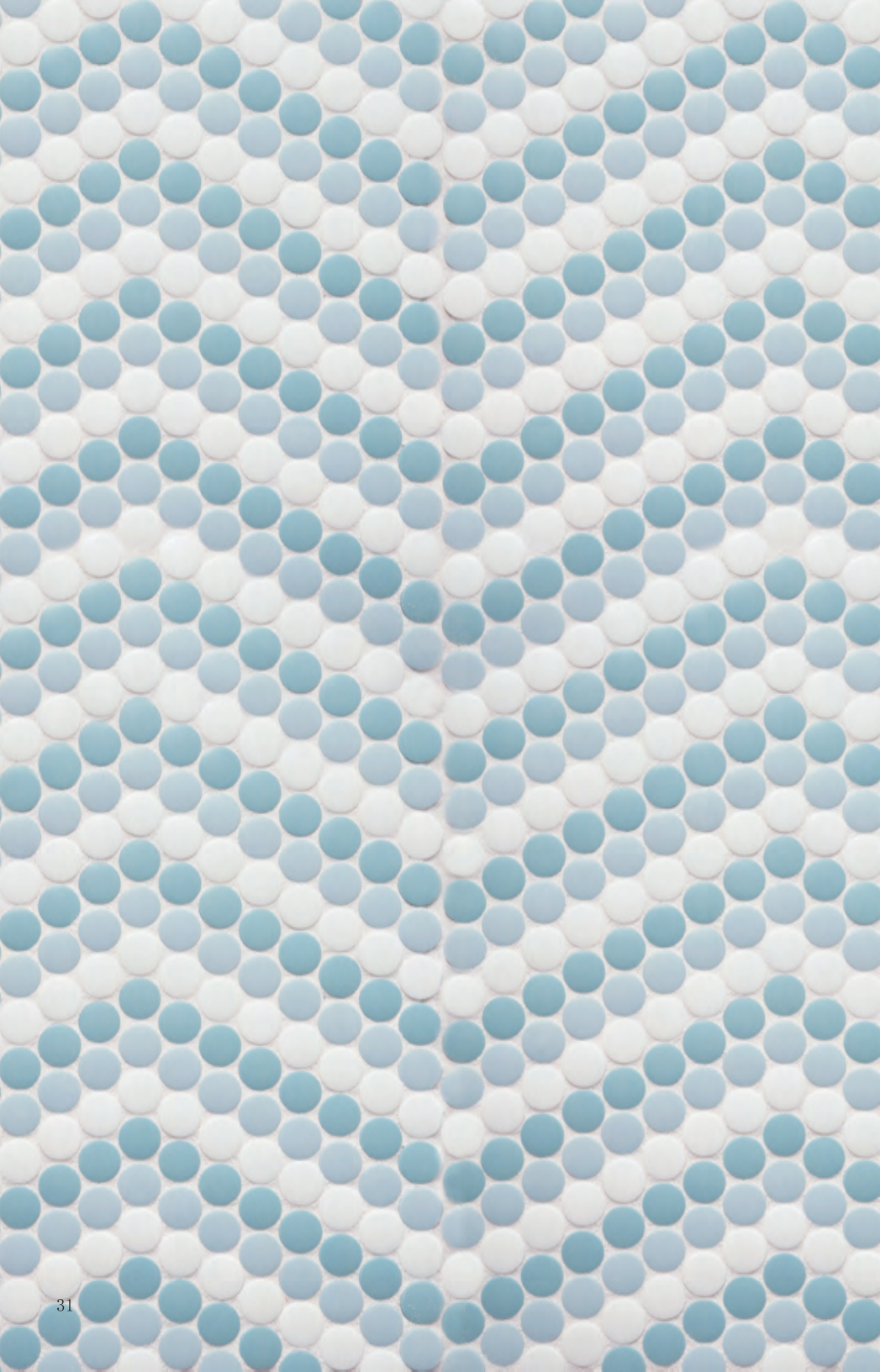




Nord  
 Cloud - Rain  
 Unit: 11 9/16" x 12 3/8"  
 Unit Yield: 0.99 sqft  
 Yield per box: 9.90 sqft  
 Piece size: Circle 3/4"  
 Sheets per box: 10  
 Pallet Yield: 802.14 sqft

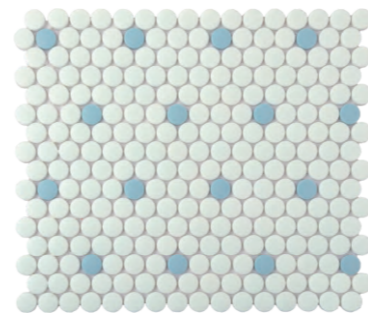




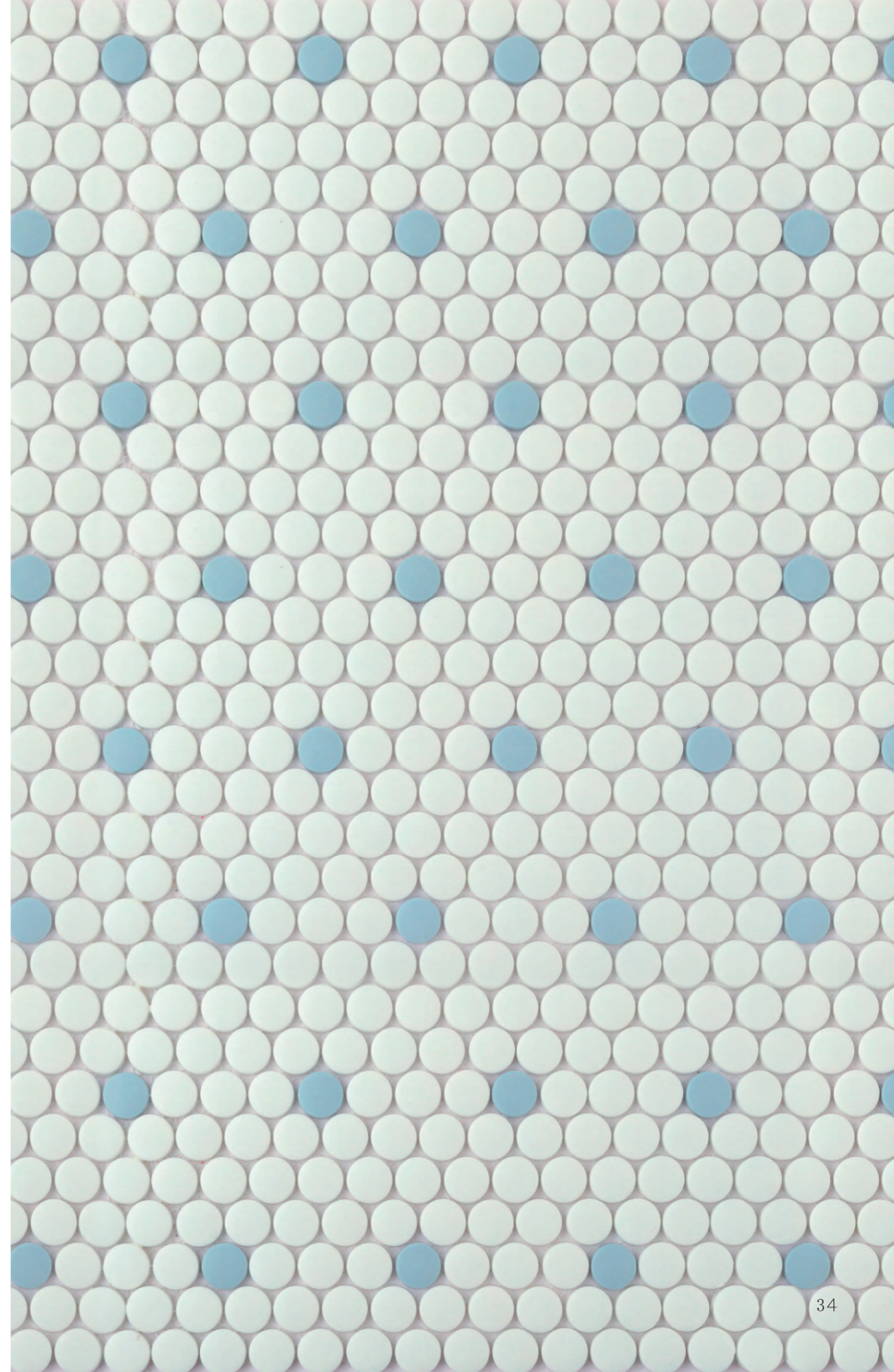


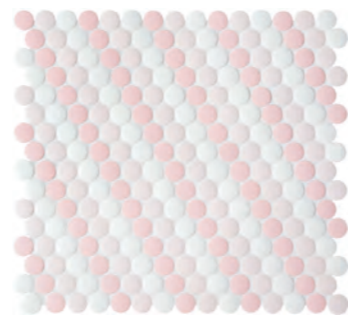
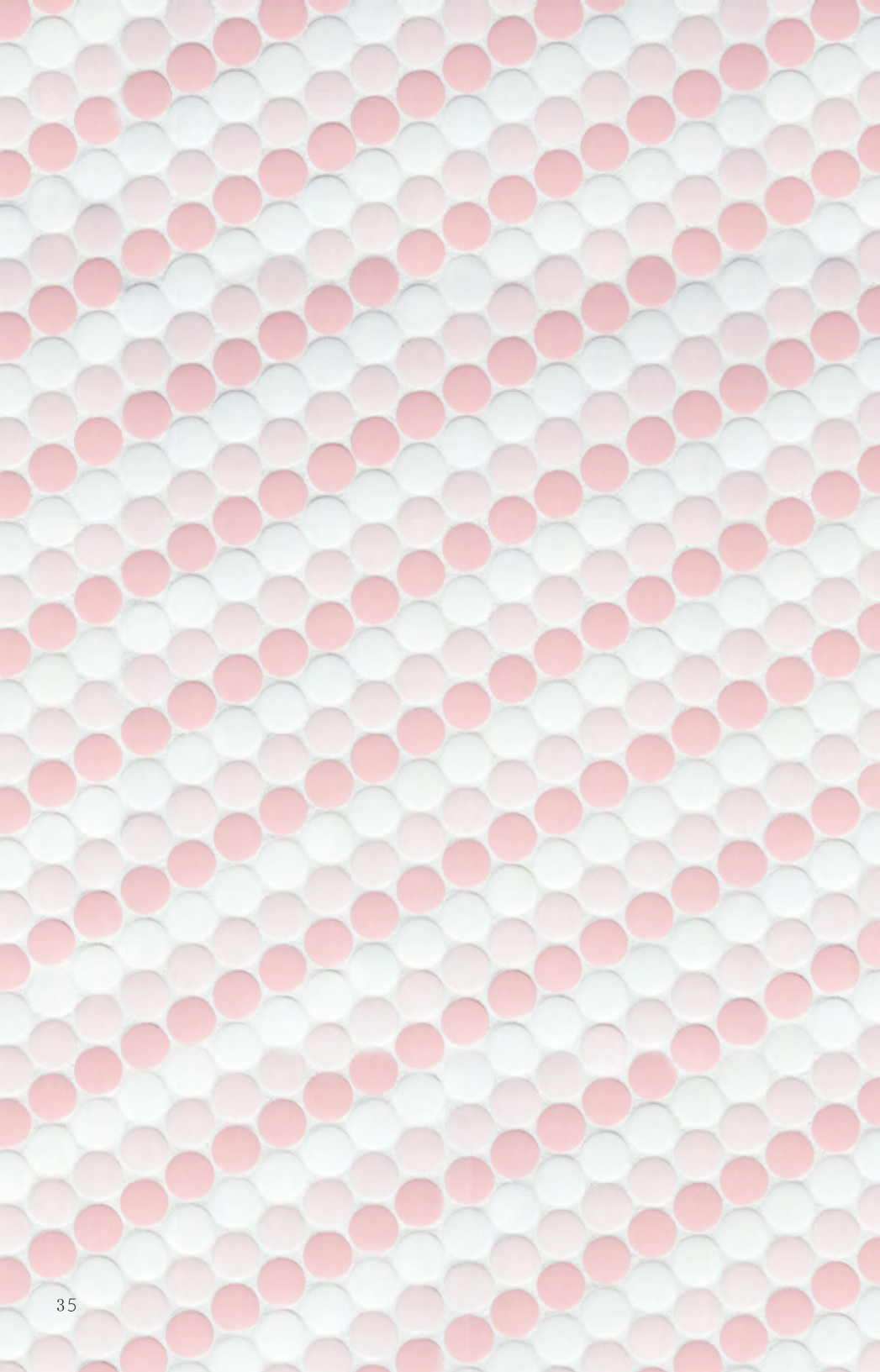
Park  
Rain - Oslo  
Unit: 11 9/16" x 12 3/8"  
Unit Yield: 0.99 sqft  
Yield per box: 9.90 sqft  
Piece size: Circle 3/4"  
Sheets per box: 10  
Pallet Yield: 802.14 sqft





Penn  
 Cloud - Oslo  
 Unit: 13 3/16" x 11 9/16"    Piece size: Circle 3/4"  
 Unit Yield: 1.06 sqft    Sheets per box: 10  
 Yield per box: 10.57 sqft    Pallet Yield: 855.79 sqft

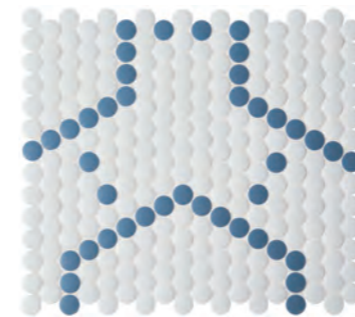




Post  
Cloud - Bloom - Petal  
Unit: 12 3/8" x 11 9/16"    Piece size: Circle 3/4"  
Unit Yield: 0.99 sqft        Sheets per box: 10  
Yield per box: 9.9 sqft      Pallet Yield: 802.14 sqft



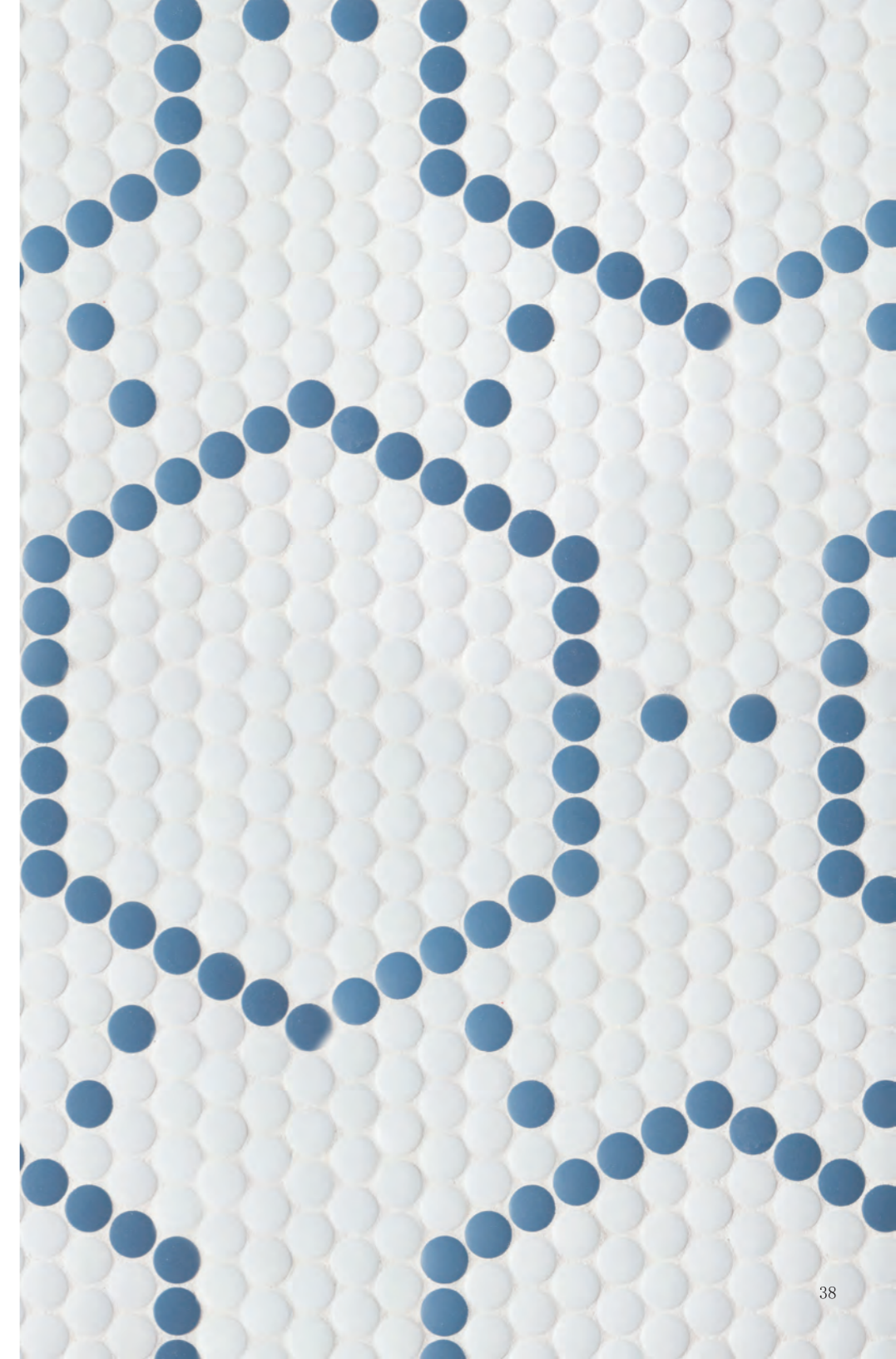
Stanton



Stanton  
Mist - Slate

Unit: 11 9/16" x 13"  
Unit Yield: 1.04 sqft  
Yield per box: 10.41 sqft

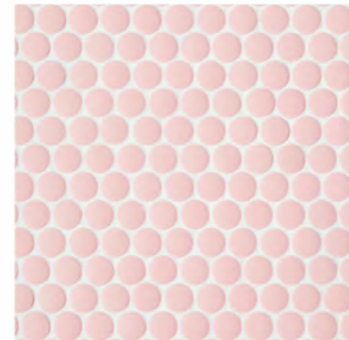
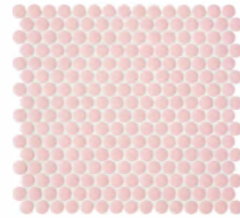
Piece size: Circle 3/4"  
Sheets per box: 10  
Pallet Yield: 843.02 sqft



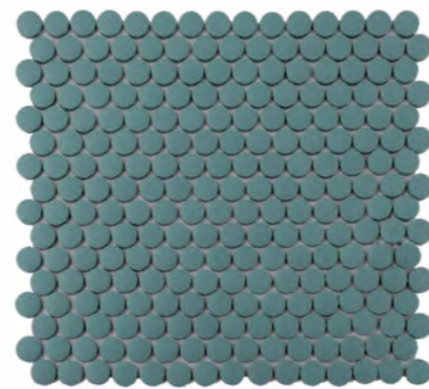
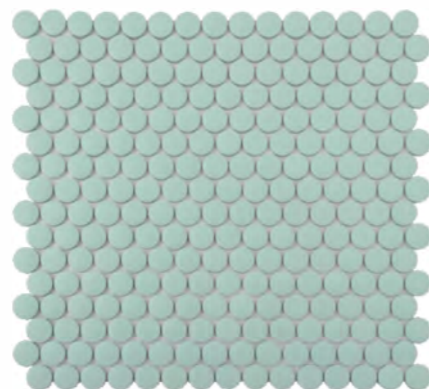
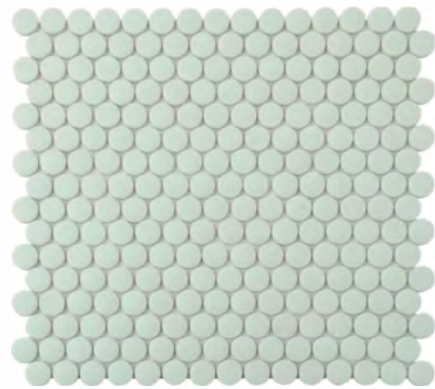




Petal



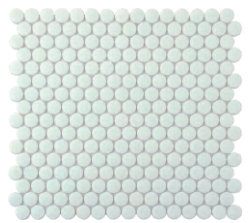
Bloom



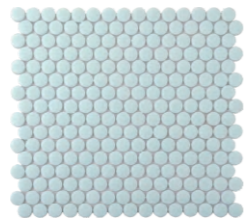
Canvas  
Unit: 12 3/8" x 11 9/16"  
Unit Yield: 0.99 sqft  
Yield per box: 9.93 sqft  
Piece size: Circle 3/4"  
Sheets per box: 10  
Pallet Yield: 804.70 sqft

Thyme  
Unit: 12 3/8" x 11 9/16"  
Unit Yield: 0.99 sqft  
Yield per box: 9.93 sqft  
Piece size: Circle 3/4"  
Sheets per box: 10  
Pallet Yield: 804.70 sqft

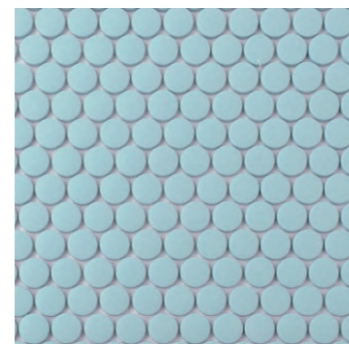
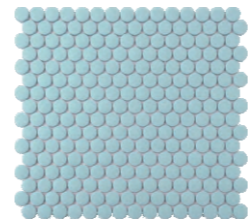
Cascade  
Unit: 12 3/8" x 11 9/16"  
Unit Yield: 0.99 sqft  
Yield per box: 9.93 sqft  
Piece size: Circle 3/4"  
Sheets per box: 10  
Pallet Yield: 804.70 sqft



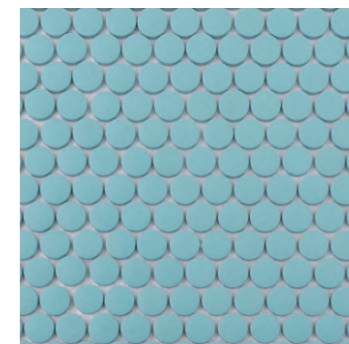
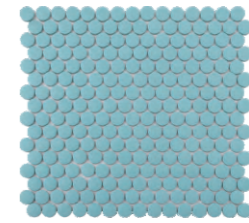
Cloud



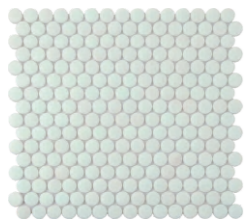
Mist



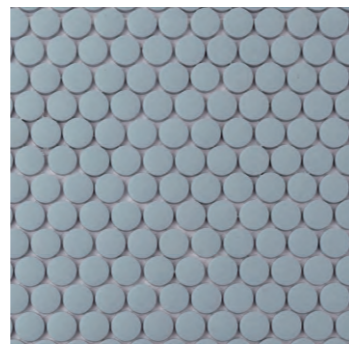
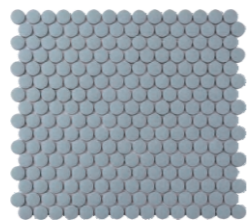
Oslo



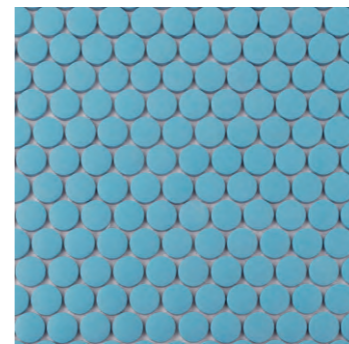
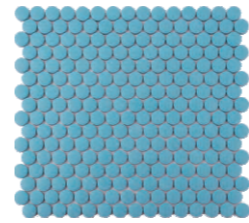
Rain



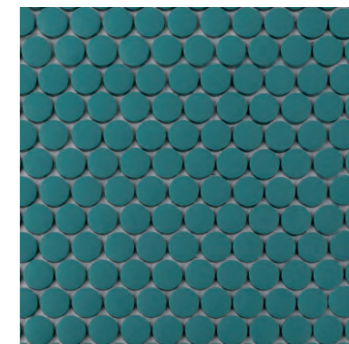
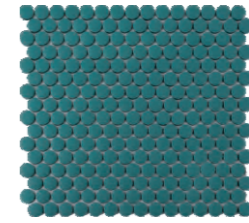
Salt



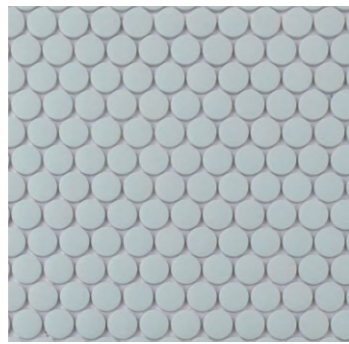
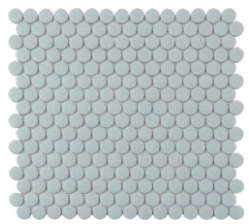
Steel



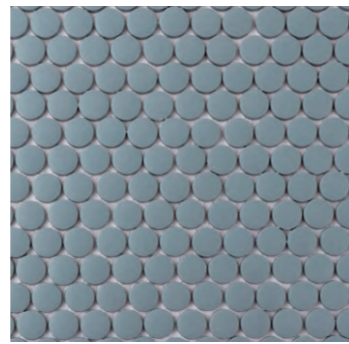
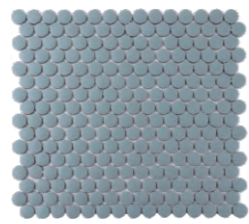
River



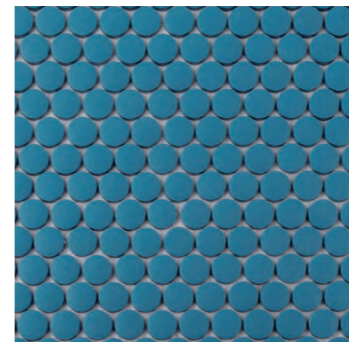
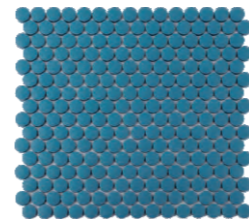
Oasis



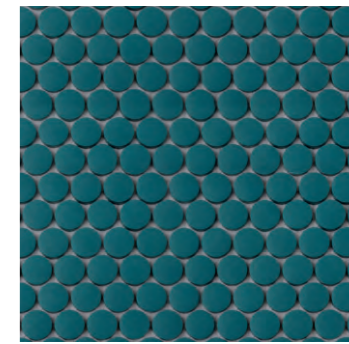
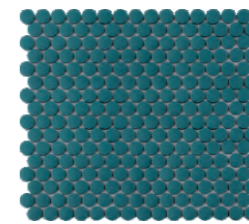
Frost



Grit



Slate



Antigua

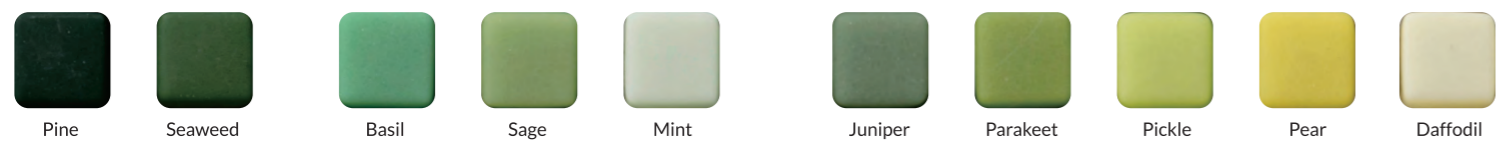
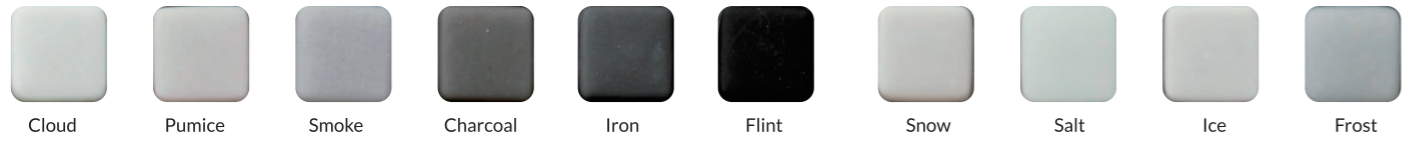
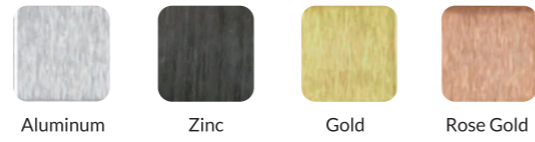
Unit: 12 3/8" x 11 9/16"  
Unit Yield: 0.99 sqft  
Yield per box: 9.93 sqft

Piece size: Circle 3/4"  
Sheets per box: 10  
Pallet Yield: 804.70 sqft

Unit: 12 3/8" x 11 9/16"  
Unit Yield: 0.99 sqft  
Yield per box: 9.93 sqft

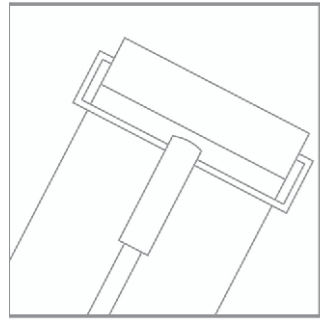
Piece size: Circle 3/4"  
Sheets per box: 10  
Pallet Yield: 804.70 sqft

# RECYCLED GLASS



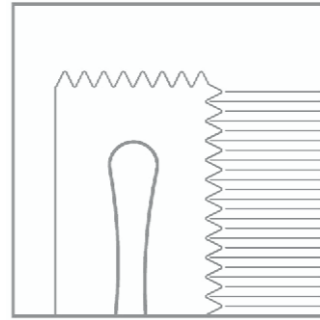


# INSTALLATION



## step 1

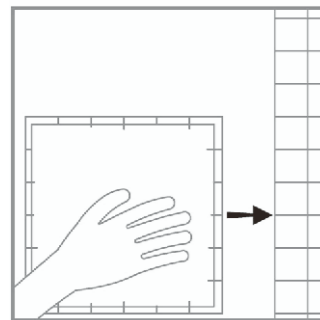
Apply a crack insulation membrane over substrate per the membrane manufacturer's instruction. Using the flat side of a trowel to initiate the bond coat. Firmly apply the setting material to the substrate.



## step 2

With additional setting materials, using a 1/4" x 1/4" V-Notch trowel, comb horizontal, full notches in one direction to establish the proper depth of the setting bed.

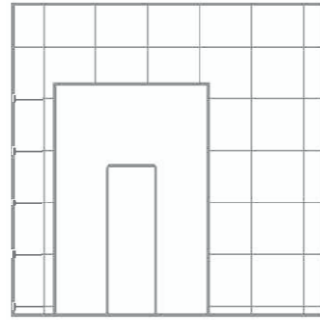
*\*only necessary if there is translucent glass*  
Using the flat side of the trowel, flatten the notches to achieve a smooth, consistent setting bed approximately 1/8" thick.



## step 3

Apply sheets into the setting bed (tile tape side towards you), using light, even pressure to establish contact and eliminate any voids. Apply each subsequent sheet so that grout joints line up and a consistent field is maintained.

\*\*Prior to setting each sheet, check the setting bed for skinning (slight drying of the thin set surface). If skinning occurs, remove thin set and repeat steps 2 and 3. Pay particular attention to the joints between sheets to eliminate any sheet pattern.

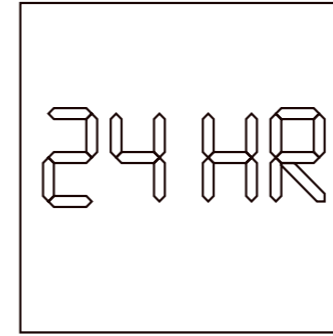


## step 4

To achieve a uniform surface:  
glass and small piece mosaics= tap lightly using a rubber grout

Large pieced mosaics= use a wooden beating block and a hammer.

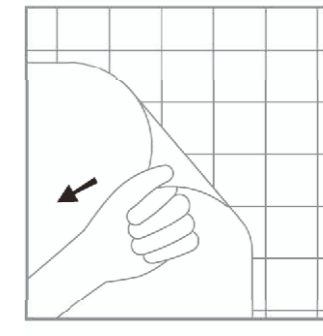
*\*To unify transitions tap from one sheet to the next.*



## step 5

Cure a minimum of 24 hours prior to cleaning and grouting.

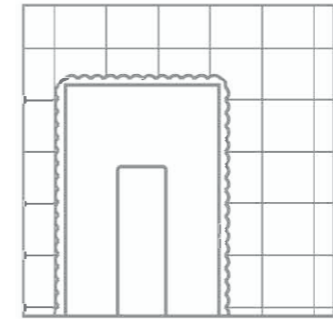
*\*Check setting materials manufactures specifications for recommended curing time.*



## step 6

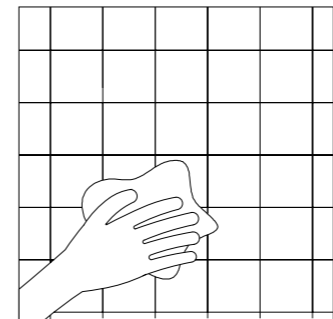
After approved setting time you may peel the face tape, starting at the corner.

Clean any tape residue with a damp sponge.



## step 7

Use grout mixed per manufacturers instructions. When grout joints are 1/32" or less, use a non sanded grout. Apply grout with a rubber float, forcing grout into joints until full. If the mosaic contains both stone and glass (or metal), expect the grout to dry and set faster around the stone. Due to the impervious nature of glass and metal, grout will take longer to set than with more porous materials such as stone.



## step 8

Allow grout joints to take initial set (turn dull). For initial cleaning use clean, dry cheesecloth. This method wicks additional moisture from the grout and avoids washing out the grout joints.

## step 9

Allow grout joints to set up a second time (turn dull) and smooth.

## step 10

For final polishing of excess grout haze use a clean, soft cloth.

# SETTING SYSTEMS

All materials should be used according to manufacturer's instructions. If the mosaic includes glass tiles, please note that due to the translucent nature of glass, the color of the bonding material will impact the ultimate look of the tile. We recommend the use of specific white bonding mortars; some mixed with specific latex admix. See the following list for required thin-set and follow manufacturer's recommended cure times for all setting materials. Pools, spas and all submerged applications require a minimum 21-day cure time after grouting and before submersion or exposure to heavy water use.

Although we require the use of highest performing setting materials for installing our products, occasionally, due to the transparent and/or light translucent nature of some of our products, visible effects, also known as "ghosting", may occur behind glass tiles.

When mixing setting and grouting materials:

1. Measure liquid and powder per manufacturer's recommendations.
2. Machine mixing will provide more consistent results.
3. Do not exceed 300 rpm or manufacturer's recommendations.
4. Setting and grouting materials need to slake (set) 10-15 minutes after mixing and be remixed before use.

## Acceptable Setting Systems (White)

- Custom Building Products: MegaFlex Crack prevention Mortar
- Custom Building Products: MegaLite Crack Prevention Mortar
- Flextile: 52 Versatile Floor Mortar
- Hydroment" ReFlex Ultra-Premium Latex-Modified Thin Set Mortar
- Kerakoll: H40 Tenax Single Component Thin-Set
- Laticrete: 254 Platinum Multipurpose Thin Set Mortar
- Mapei: Adhesilex P10 mixed with Keraply mortar additive
- TEC (H.B. Fuller): Super Flex Premium Performance Universal Latex-Modified Thin-Set Mortar
- FOR METAL (Geometro): Litokol LitoElastic Epoxy

## Unacceptable Setting Systems

- Organic adhesive (mastic) – due to yellowing and low bond strength
- Epoxy – due to low flexibility, as well as degeneration in UV sunlight

## Movement Joints

Movement joints are essential for the success of most tile installations. Follow recommendations on Movement Joints EJ171-07 in the "2008 TCA Handbook for Ceramic Tile Installation." Movement joint requirements will vary depending on substrate, climate and size of installation. An architect or design professional should be consulted when specifying the exact number and location of each movement joint. Saw-tooth joints are not recommended. Certain application may require a different type of sealant.

## Acceptable Flexale Joint Fillers

- Hydroment: Chem-Calk 900 One-Part Urethane Sealant
- Kerakoll: Sigibuild PU Poly-Urethane Sealant
- Laticrete: Latasil 100% Silicone
- Silaflex: 1A or 2C Polyurethane-based Sealant

# SETTING SYSTEMS

## Grout

Install grout mix according to manufacturer's instructions. Grout should be full and uniformly finished. Due to the impervious quality of glass, the grout will take longer to begin setting-up. For initial cleaning of grout from the tile face, use clean, dry cheesecloth. This wicks additional moisture from the grout and avoids washing out the joints. Use on a clean, damp sponge for the final cleaning and smoothing of the joints. For final polishing of excess haze use a clean, soft cloth.

## Acceptable Grouts

- Custom Building Products: Prism SureColor Grout (can go in pools)
- Custom Building Products: Fusion Grout
- Custom Building Products: Polyblend Sanded Tile Grout
- Flextile: 600 Polymer Sanded Floor Grout
- Hydroment: Sanded Ceramic Tile Grout
- Kerakoll: Fugabella 2-12
- Laticrete: 1500 Series Tile Grout or Equivalent
- Mapei: Ker200 Series and Ker700 Series Ultra/Color
- Tec: AccuColor Premium Sanded Tile Grout
- Litokol Starlike (for LeMer)
- Litokol Starlike grout or Customs Prism (for Gunmetal - Geometro)

An Acrylic grout admix can improve freeze-thaw resistance. Check manufacturer's recommendations.

## Unacceptable Grout

- Epoxy Grout – due to low flexibility, as well as degeneration in UV sunlight
- Non-sanded grout – due to shrinkage
- Consult grout manufacturers before considering blue, green or red grout in submerged applications.

## Anti-Fracture/Waterproofing Membranes

- Aquafin 1K and 2K/M: Cementitious waterproofing system
- Custom Building products: RedGard Waterproofing and Crack Prevention Membrane
- Hydroment: Gold Anti-fracture and waterproofing membrane
- Laticrete: 9235 waterproof & anti-fracture membrane
- Tec: T1-324 Triple-Flex waterproofing/crack isolation membrane
- Xypex: Concentrate

NOTE: We do not recommend membranes directly behind the setting material when installing translucent or transparent glass tile.

# RECYCLED TEST RESULTS

## Test Results of ROHS Directive

Tested Elements	Results(ppm)
CADMIUM (cd)	ND
LEAD (cd)	ND

ppm= parts per million  
ND= Not Detected

## Radioactivity of Building Materials

RADIOACTIVITY OF BUILDING MATERIALS WERE EVALUATED IN ACCORDANCE WITH GB 6566-2010, TYPE A DECORATION MATERIALS.

Tested Elements	Results
RADIUM-226 Radioactivity Rate Activity, Bq/kg	4.906
THORIUM-232 Radioactivity Rate Activity, Bq/kg	2.999
POTASSIUM-40 Radioactivity Rate Activity, Bq/kg	48.61

### TYPE A DECORATION MATERIALS

Requirements	Results
IRRADIATION < 1. 0	< 0.1
EXTERNAL IRRADIATION < 1. 3	< 0.1

RADIOACTIVITY OF BUILDING MATERIALS CONFORM TO REQUIREMENTS SPECIFIED IN GB 6566-2010, TYPE A DECORATION MATERIALS.

## Recycled Content of Material

THE FACTORY DECLARES THAT THE CONTENTS OF ENAMEL GLASS MOSAIC ARE SILICA (SIO<sub>2</sub>) AND ZIRCONIUM SILICATE; AND ALL MATERIALS ARE RECYCLED FROM COLLET. NO OTHER NEW RAW MATERIALS ARE ADDED DURING THE MANUFACTURING PROCESS. THE RECYCLED CONTENT OF MATERIALS IS 98%.

## Water Absorption

Group No.	Test Method	Test Results (%)	
1	ISO 10545-3:1995	1.00	Average: 0.67
2		0.43	
3		0.49	
4		0.57	
5		1.09	
6		0.66	
7		0.51	
8		0.61	
9		0.63	
10		0.72	

Specimen dimensions: 20mm X 20mm x 7mm, 9pcs in each group

## Resistance to Stain

Group No.	Test Method	Green Staining	Iodine 13g/L	Olive Oil
1	ISO 10545-14:1995	5	5	5
2		5	5	5
3		5	5	5
4		5	5	5
5		5	5	5

Specimen dimensions: 20mm X 20mm X 7mm, 15pcs

## Thermal Stability

Test Items	Test Method	Test Results
Thermal Stability	With reference to GB/T 7697-1996	No cracking or breakage on the surface of all test specimens
Thermal Shock Resistance	ISO 10545-9:2013	Fully resistance
Frost Resistance	ISO 10545-12: 1995/Cor I: 1997	Fully resistance

Specimen dimensions: 20mm x 20mm x 7mm, 50pcs

## Coefficient of Friction

Test method: GB/T 4100-2006 Annex M Determining the Coefficient of Friction of Ceramic Tile Specimens: 170mmx170mm, 3pcs, all test samples were cut from the products with the size of 320mmx320mm

Test Items	Test Results
Coefficient of Friction for Dry Surface	0.77
Coefficient of Friction for Wet Surface	0.50

## Resistance to Surface Abrasion

Test method: Refer to ISO 10545-7:1996 Ceramic tiles-part 7: Determination of resistance to surface abrasion for glazed tiles

Specimens: mosaic

Test Results: After 1500 revolutions, visual failure occurred.

## Chemical Resistance

Test method: GB/T 4100-2006 Annex M Determining the Coefficient of Friction of Ceramic Tile Specimens: 170mmx170mm, 3pcs, all test samples were cut from the products with the size of 320mmx320mm

Aqueous test solutions		Test Results	
Household chemicals	Ammonium chloride solution, 100g/l	Visual examination	Class: GA
Swimming pool salts	Sodium hypochlorite solution, 20mg/l	Visual examination	Class: GA
Low concentrations acids & alkalis	Hydrochloric acid solution, 3%(V/V)	Visual examination	Class: GLA
	Citric acid solution, 100g/l	Visual examination	Class: GLA
	Potassium hydroxide solution, 30g/l	Visual examination	Class: GLA

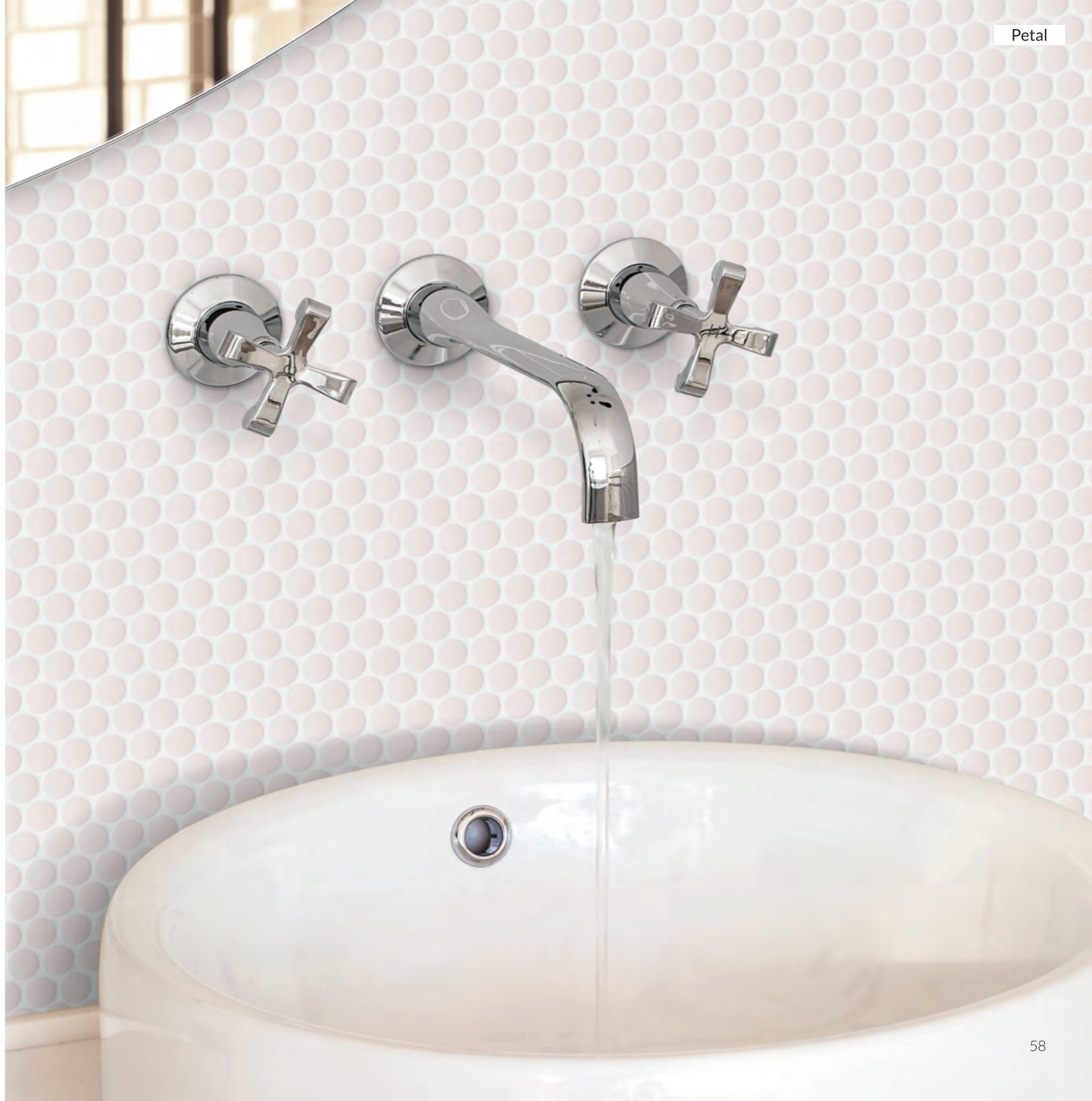
## ISO 13006:2012 Ceramic tiles -Definitions, classification, characteristics and ,marking

Properties	Test Method	Requirements	Results	Verdicts
Physical property				
Water absorption percent mass fraction	ISO 10545-3: 1995/Cor. 1: 1997	Eb>10% Individual minimum 9%	11.7% 11.2%- 12.2%	P
Thermal shock resistance	ISO 10545-9:2013	Test method available	Fully resistance	-
Frost resistance	ISO 10545-12: 1995/Cor 1: 1997	required	Fully resistance	P
Chemical Property				
Resistance to staining				
a) Green staining agent in light oil	ISO 10545-14:2015	Minimum Class 3	Class 5	P
b) Red staining agent in light oil	ISO 10545-14:2015	Minimum Class 3	Class 5	P
c) Olive oil	ISO 10545-14:2015	Minimum Class 3	Class 5	P
Resistance to chemicals & swimming pool salts				
a) Household chemicals: Ammonium chloride, 100g/L	ISO 10545-13:2016	Minimum GB	A	P
b) Swimming pool salts: Sodium hypochloric solution, 20mg/L	ISO 10545-13:2016	Minimum GB	A	P
Resistance to low concentrations of acids and alkalis				
a) Hydrochloric acid solution, 3% (v/v)	ISO 10545-13:2016	Manufacturer to state classification	LB	-
b) Citric acid solution, 100g/L	ISO 10545-13:2016	Manufacturer to state classification	LA	-
c) Potassium hydroxide, 30g/L	ISO 10545-13:2016	Manufacturer to state classification	LA	-
Resistance to high concentrations of acids and alkalis				
a) Hydrochloric acid solution, 18% (v/v)	ISO 10545-13:2016	Test Method available	HB	-
b) Lactic acid, 5 % (v/v)	ISO 10545-13:2016	Test Method available	HA	-
c) Potassium hydroxide, 100g/L	ISO 10545-13:2016	Test Method available	HA	-
Lead & Cadmium release				
a) Lead release, in mg/dm <sup>2</sup>	ISO 10545-15:1995	Test Method available	<0.01	-
b) Cadmium release, in 1ng/d1n <sup>2</sup>	ISO 10545-15:1995	Test Method available	<0.002	-

1. P(pass): Test item does meet the requirement.
2. F(fail): Test item, does not meet the requirement.
3. -: Verdict was not carried out.
4. N/A: Test case does not apply to the test item

# METALLIC TEST RESULTS

Name of Sample	Stainless Steel Mosaics	Nominal size (N)	31cmx26.5cm
Nature of Surface	Glazed (GL)	Work size (Sw)	310mmx265mmx8mm
Group	BIII	Description of Samples	The samples are sound, intact and fit for test.
Mark of Samples	SS130D	Quantity of samples	30 Pieces
Test Standard	ISO 13006:2012 Cera1nic tiles -Definitions, classification, characteristics and marking Annex L Dry-pressed ceramic tiles Eb > 10 % Group BIII		
Conclusion of Test	The results conform to the requirement of Annex L of standard ISO 13006:2012 with respect to the test items.		





# APPLICATIONS & SPECIFICATIONS

## Applications:



Interior Wall



Interior Floor



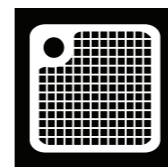
Exterior Wall



Exterior Floor



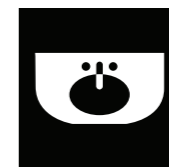
Shower



Wet/Shower Floor



Spa/Steam Room



Table/Surface Top



Pool/ Submersion

## Specifications:



Lineal Thermal Expansion Tested



Abrasion Resistant



Frost Resistant



Chemical Resistant

resistant to staining agents



Made from Recycled Material & Can be Recycled

mantel face & hearth, not approved for interior firebox

# INDEX

## A

<u>Antigua</u>	44
<u>Antwerp</u>	3
<u>Applications &amp; Spec</u>	60

## B

<u>Bank</u>	6
<u>Baskin</u>	7
<u>Belle</u>	10
<u>Bloom</u>	11
<u>Bloom (Solid)</u>	42

## C

<u>Camden</u>	14
<u>Canvas</u>	41
<u>Cascade</u>	41
<u>Centre</u>	15
<u>Cloud</u>	43
<u>Colfax</u>	18

## F

<u>Ferro</u>	19
<u>Frost</u>	43

## G

<u>Grande</u>	22
<u>Grit</u>	43

## H - I

<u>Holland</u>	23
<u>Hudson</u>	26
<u>Installation</u>	47-48

## M

<u>Metallic Test Results</u>	57
<u>Mist</u>	43
<u>Monroe</u>	27

## N

<u>Nord</u>	30
-------------	----

## O

<u>Oasis</u>	44
<u>Oslo</u>	44

## P

<u>Park</u>	31
<u>Penn</u>	34
<u>Petal</u>	42
<u>Post</u>	35

## R

<u>Rain</u>	44
<u>Recycled Glass</u>	45-46
<u>Recycled Test Results</u>	53-56
<u>River</u>	44

## S

<u>Salt</u>	43
<u>Setting Systems</u>	49-52
<u>Slate</u>	44
<u>Stanton</u>	38
<u>Steel</u>	43

## T

<u>Thyme</u>	41
--------------	----







maisonsurface.com